



Price

£525,000

Freehold

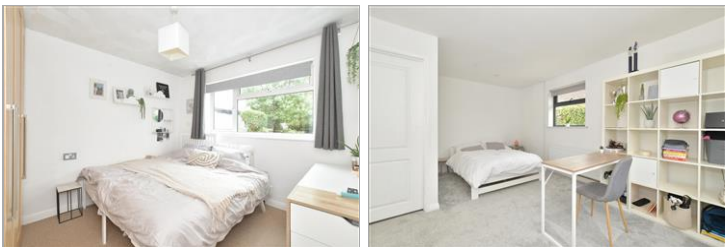
3x  1x  1x 

**Burlow Close, Birdham,
Chichester, West
Sussex, PO20**

OVER 60?

Secure this property
for up to **59% less!**

cubitt&west
Helping you move forwards



Main features

- Spacious, detached bungalow on private road
- Potential to extend & develop (subject to consents)
- Flexible bedrooms & social space depending on buyer's needs
- Sunny rear garden
- Easy access to local shops
- Excellent school catchment area

Accommodation

GROUND FLOOR

Hallway

Kitchen/Diner: 22'11 x 9'11 (6.99m x 3.02m)

Lounge: 12'10 x 9'11 (3.91m x 3.02m)

Bedroom 1: 16'11 x 12'10 at widest point (5.16m x 3.91m)

Bedroom 2: 11'0 x 9'11 (3.36m x 3.02m)

Bedroom 3: 9'4 x 7'10 (2.85m x 2.39m)

Bathroom

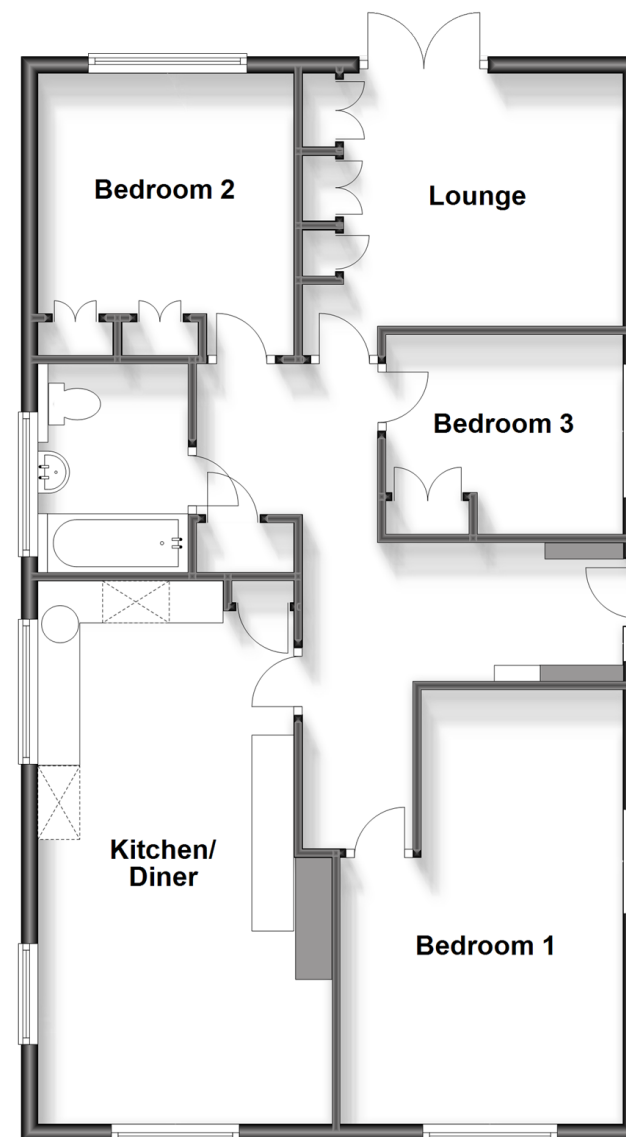
OUTSIDE

Garage & Off Road Parking

Rear Garden

Ground Floor

Approx. 87.5 sq. metres (941.7 sq. feet)



Call Chichester - 01243 786581 ■ cubittandwest.co.uk

- Legal advice should be taken to verify fixtures/fittings, planning, alterations and/or lease details
- Appliances & services are untested, dimensions are approximate and floor plans are not to scale
- Through a Homewise Home For Life Plan people aged 60+ can secure this property for up to 59% less, by purchasing a Lifetime Lease.



40414776/20231113/VB/RC