



OVER 60?

Secure this property
for up to **59% less!**

Price

£440,000

Freehold

3x  2x  1x 

**Lunar Crescent, Selsey,
West Sussex, PO20**

cubitt&west
Helping you move forwards



Main features

- **Spacious, detached house on corner plot & close to the seafront**
- **Light & airy living room with large bay windows overlooking the green**
- **Low maintenance garden with great space to host & enjoy social events**
- **Remaining NHBC guarantee in place**
- **Easy access to the high street & local supermarket**

Accommodation

GROUND FLOOR

Hallway

Kitchen/Diner: 16'4 x 13'0 into bay (4.98m x 3.97m)

Cloakroom

Living Room: 16'4 x 14'4 up to bay (4.98m x 4.37m)

FIRST FLOOR

Landing

Bedroom 1: 12'9 into alcove x 11'8 up to fitted wardrobes (3.89m x 3.56m)

En-Suite Shower Room

Bedroom 2: 10'6 x 8'7 up to fitted wardrobes (3.20m x 2.62m)

Bedroom 3: 7'3 x 6'11 (2.21m x 2.11m)

Bathroom

OUTSIDE

Front & Rear Gardens

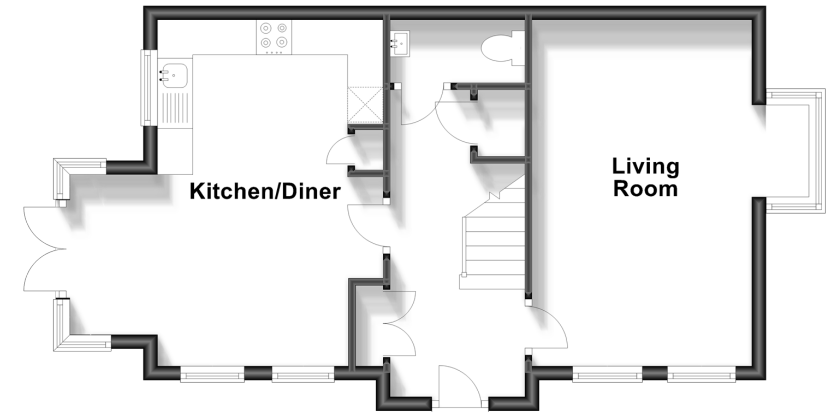
Garage & Off Road Parking

Call Chichester - 01243 786581 ■ cubittandwest.co.uk

- Legal advice should be taken to verify fixtures/fittings, planning, alterations and/or lease details
- Appliances & services are untested, dimensions are approximate and floor plans are not to scale
- Through a Homewise Home For Life Plan people aged 60+ can secure this property for up to 59% less, by purchasing a Lifetime Lease.

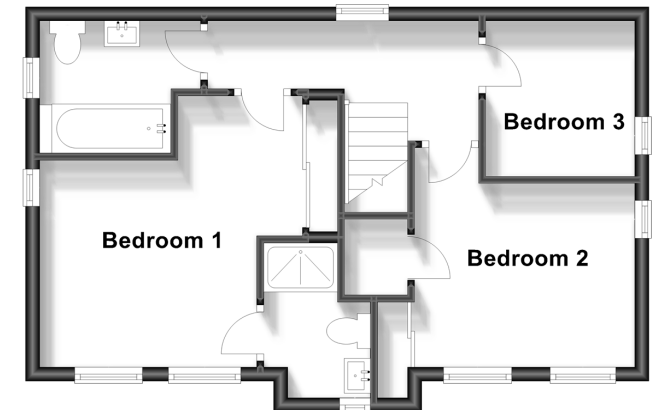
Ground Floor

Approx. 45.9 sq. metres (493.7 sq. feet)



First Floor

Approx. 42.4 sq. metres (456.4 sq. feet)



40414792/20231213/JH/RC