



**Price**  
**£395,000**

**Freehold**

3x  1x  1x 

**Selham Close,  
Chichester, West  
Sussex, PO19**

**OVER 60?**

Secure this property  
for up to **59% less!**

**cubitt&west**  
Helping you move forwards





## Main features

- **Good sized terraced house - ideal for families**
- **Located in the desirable Marchwood development**
- **Bright & spacious rooms throughout**
- **Secluded rear garden offering privacy**
- **Access to the development's swimming pool & tennis courts**
- **Peaceful cul-de-sac position**
- **Only a short walk into Chichester's city centre**
- **Benefits from an integral garage & off road parking**

## Accommodation

### GROUND FLOOR

#### Hallway

Lounge: 15'2 x 11'8 (4.63m x 3.56m)

Kitchen: 8'8 x 7'7 (2.64m x 2.31m)

### FIRST FLOOR

#### Landing

Bedroom 1: 13'1 x 8'10 (3.99m x 2.69m)

Bedroom 2: 11'9 x 10'8 (3.58m x 3.25m)

Bedroom 3: 8'10 x 6'1 (2.69m x 1.86m)

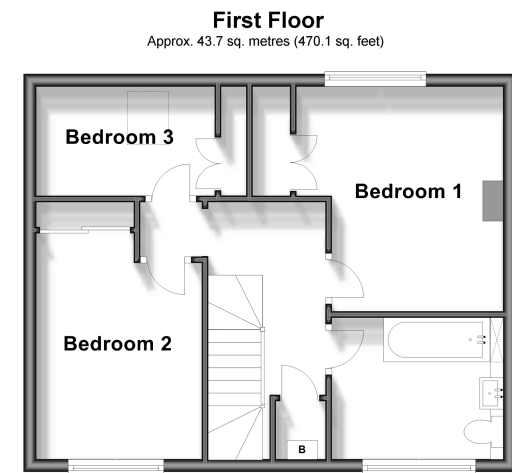
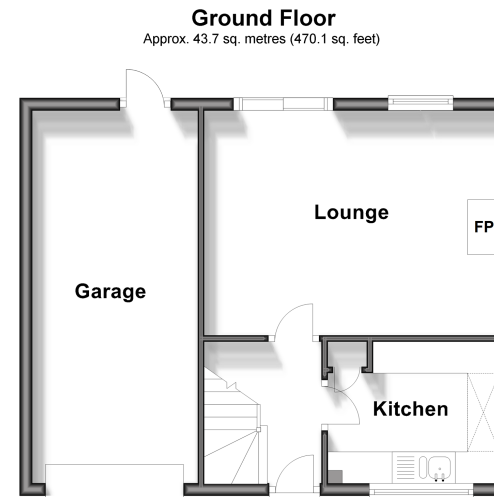
#### Bathroom

### OUTSIDE

#### Front & Rear Gardens

Integral Garage: 19'8 x 8'7 (6.00m x 2.62m)

#### Off Road Parking



**Call Chichester - 01243 786581 ■ [cubittandwest.co.uk](http://cubittandwest.co.uk)**

- Legal advice should be taken to verify fixtures/fittings, planning, alterations and/or lease details
- Through a Homewise Home For Life Plan people aged 60+ can secure this property for up to 59% less, by purchasing a Lifetime Lease.

- Appliances & services are untested, dimensions are approximate and floor plans are not to scale



40414837/20240416/KF/JH