



Price

£560,000

**Share of
Freehold**

2x  2x  2x 

**Northlands House,
Salthill Road,
Chichester, West
Sussex, PO19**

OVER 60?

Secure this property
for up to **59% less!**

cubitt&west
Helping you move forwards



Main features

- High-end, ground floor, split-level maisonette with stunning rural surroundings
- Benefits from a double garage & residents parking
- Beautiful, custom-built kitchen
- Boasts 2 private terraces
- Mezzanine level with fitted home office area in lounge

Accommodation

GROUND FLOOR

Hallway

Lounge With Mezzanine Office: 19'7 x 18'5 (5.97m x 5.62m)

Shower Room: 5'6 x 4'5 (1.68m x 1.35m)

Dining Room: 10'9 x 9'0 (3.28m x 2.75m)

Kitchen: 15'0 x 8'4 (4.58m x 2.54m)

FIRST FLOOR

Landing

Bedroom 1: 13'11 x 11'0 (4.24m x 3.36m)

En-Suite Shower Room: 7'1 x 5'9 (2.16m x 1.75m)

Bedroom 2: 12'9 x 8'0 (3.89m x 2.44m)

OUTSIDE

Front & Rear Terraces

Summer House

Communal Gardens

Double Garage

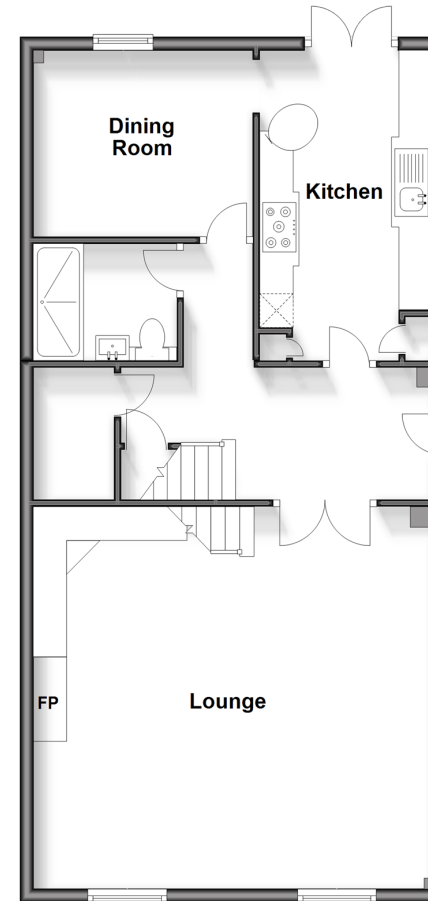
Residents Parking

Call Chichester - 01243 786581 ■ cubittandwest.co.uk

- Legal advice should be taken to verify fixtures/fittings, planning, alterations and/or lease details
- Appliances & services are untested, dimensions are approximate and floor plans are not to scale
- Through a Homewise Home For Life Plan people aged 60+ can secure this property for up to 59% less, by purchasing a Lifetime Lease.

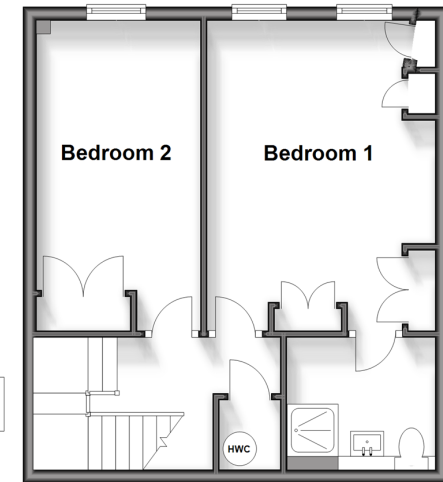
Ground Floor

Approx. 74.2 sq. metres (799.2 sq. feet)



First Floor

Approx. 39.8 sq. metres (428.4 sq. feet)



40414846/20240108/VB/VB