



Price

£340,000

Freehold

2x  1x  1x 

**Lawrence Close, Selsey,
Chichester, West
Sussex, PO20**

OVER 60?

Secure this property
for up to **59% less!**

cubitt&west
Helping you move forwards



Main features

- Spacious, detached bungalow with a garage & driveway
- Bright & airy rooms throughout
- Modern kitchen with recently replaced boiler
- Quiet cul-de-sac position & sought-after village location
- Close to the seafront & easy access to the High Street

Accommodation

GROUND FLOOR

Hallway

Bedroom 1: 15'2 into bay x 8'11 (4.63m x 2.72m)

Lounge: 14'8 x 11'2 (4.47m x 3.41m)

Conservatory: 9'8 x 9'6 (2.95m x 2.90m)

Kitchen: 12'0 x 10'7 (3.66m x 3.23m)

Shower Room: 7'8 x 5'6 maximum (2.34m x 1.68m)

Bedroom 2: 10'6 x 8'2 (3.20m x 2.49m)

OUTSIDE

Garage & Off Road Parking

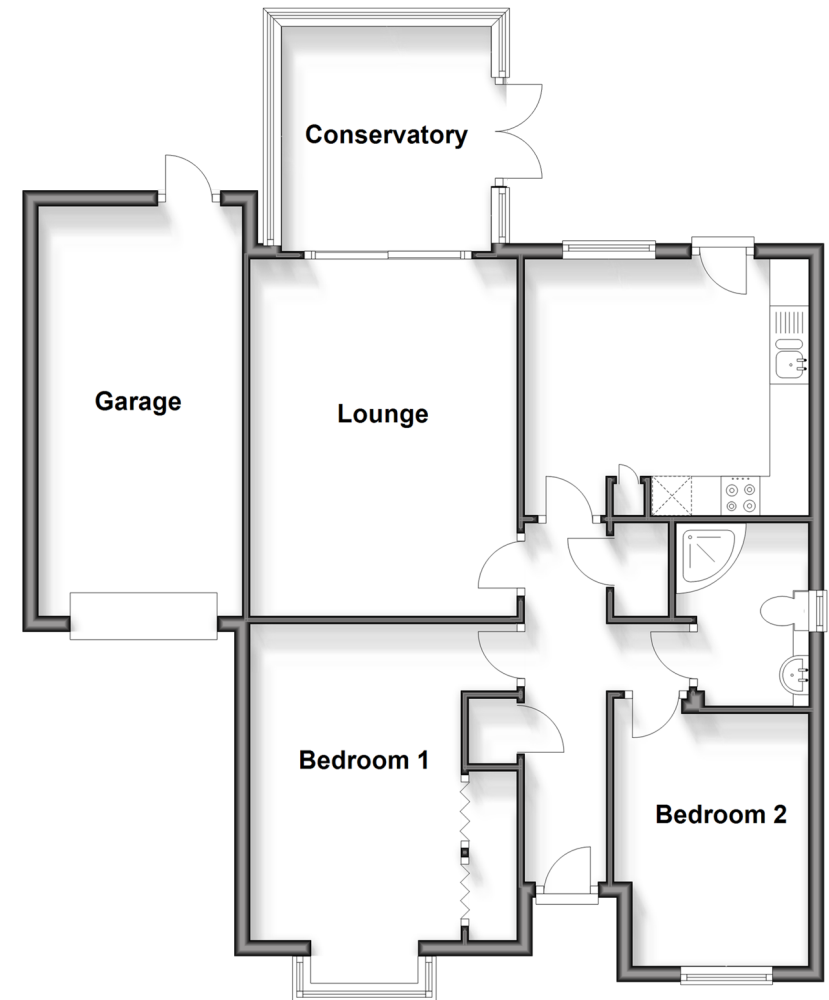
Front & Rear Gardens

Shed

Greenhouse

Ground Floor

Approx. 84.8 sq. metres (912.9 sq. feet)



Call Chichester - 01243 786581 ■ cubittandwest.co.uk

- Legal advice should be taken to verify fixtures/fittings, planning, alterations and/or lease details
- Appliances & services are untested, dimensions are approximate and floor plans are not to scale
- Through a Homewise Home For Life Plan people aged 60+ can secure this property for up to 59% less, by purchasing a Lifetime Lease.



40414876/20240328/RC/VB