



Price
£439,000

Freehold

4x  3x  1x 

**Whyke Marsh,
Chichester, West
Sussex, PO19**

OVER 60?

Secure this property
for up to **59% less!**

cubitt&west
Helping you move forwards



Main features

- Amazing end of terrace house with sunny rear garden
- Spacious accommodation throughout
- Benefits from 2 allocated parking spaces
- Ideal family home
- Close to local shops, schools & train station

Accommodation

GROUND FLOOR

Hallway

Lounge: 18'1 x 13'5 at widest point (5.52m x 4.09m)

Kitchen/Diner: 17'0 x 9'3 (5.19m x 2.82m)

Cloakroom

FIRST FLOOR

Landing

Bedroom 2: 13'8 x 11'1 (4.17m x 3.38m)

En-Suite Shower Room

Bedroom 3: 10'0 x 9'7 (3.05m x 2.92m)

Bedroom 4: 9'5 x 7'2 (2.87m x 2.19m)

Bathroom

SECOND FLOOR

Landing

Bedroom 1: 17'2 x 16'4 into alcove (5.24m x 4.98m)

En-Suite Shower Room

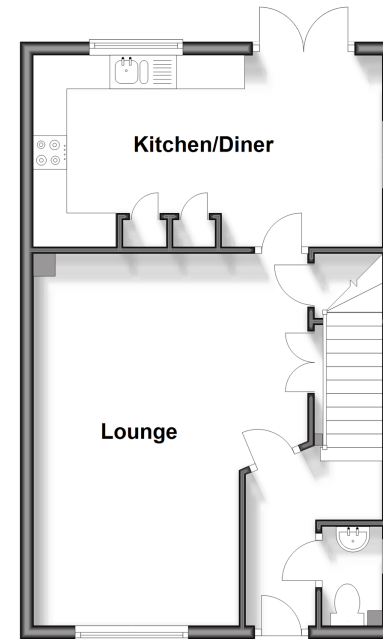
OUTSIDE

Allocated Parking

Rear Garden

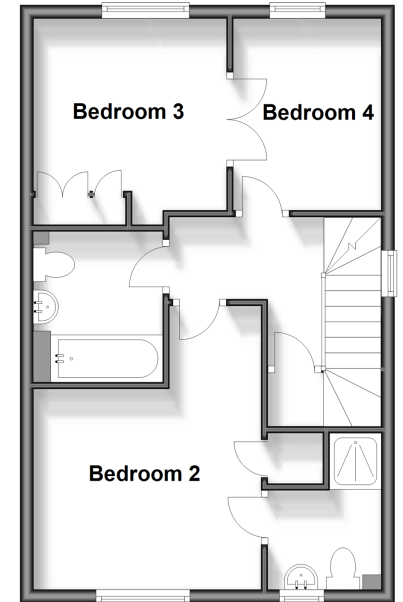
Ground Floor

Approx. 44.2 sq. metres (475.4 sq. feet)



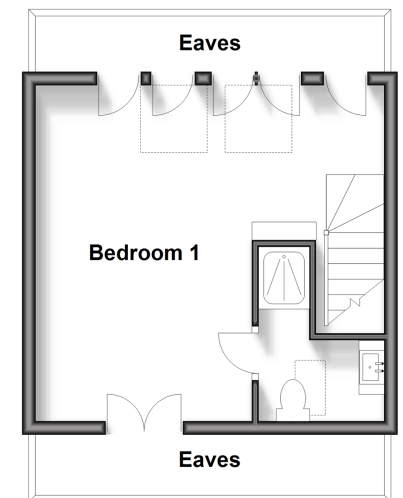
First Floor

Approx. 44.2 sq. metres (475.4 sq. feet)



Second Floor

Approx. 26.0 sq. metres (280.1 sq. feet)



Call Chichester - 01243 786581 ■ cubittandwest.co.uk

- Legal advice should be taken to verify fixtures/fittings, planning, alterations and/or lease details
- Appliances & services are untested, dimensions are approximate and floor plans are not to scale
- Through a Homewise Home For Life Plan people aged 60+ can secure this property for up to 59% less, by purchasing a Lifetime Lease.



40414885/20240221/KF/JH