



Price
£1,500,000

Freehold

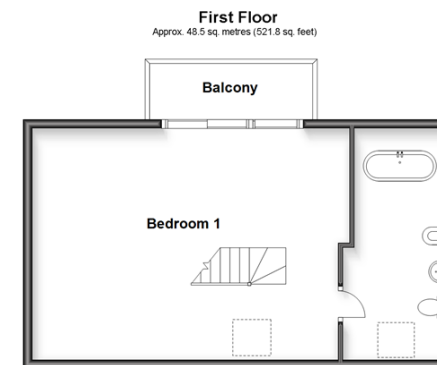
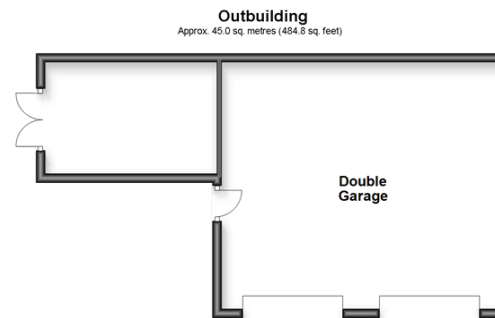
4x  2x  3x 

**Rectory Lane, Selsey,
Chichester, West
Sussex, PO20**

OVER 60?

Secure this property
for up to **59% less!**

cubitt&west
Helping you move forwards



Accommodation

GROUND FLOOR

Entrance Hallway

Lounge: 18'8 x 13'5 (5.69m x 4.09m)

Dining Area: 13'5 x 11'0 (4.09m x 3.36m)

Hallway

Utility Room: 11'9 x 9'3 (3.58m x 2.82m)

Sitting Area: 15'6 x 11'0 (4.73m x 3.36m)

Kitchen: 13'6 x 13'3 (4.12m x 4.04m)

Bedroom 2: 16'7 maximum x 10'11 (5.06m x 3.33m)

Bedroom 3: 13'3 x 11'2 (4.04m x 3.41m)

Bedroom 4/Study: 12'0 x 9'4 (3.66m x 2.85m)

Jack & Jill Bathroom

Rear Lobby

Swimming Pool

Store Room: 18'3 x 14'1 (5.57m x 4.30m)

FIRST FLOOR

Landing

Bedroom 1: 23'5 x 17'3 (7.14m x 5.26m)

En-Suite Bathroom

Balcony

OUTSIDE

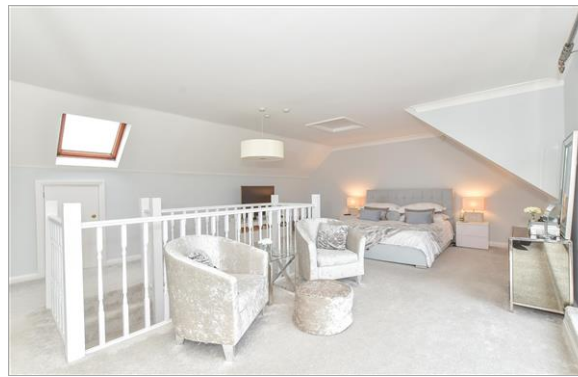
Front & Rear Gardens

Garden Store/Workshop: 12'9 x 8'10 (3.89m x 2.69m)

Double Garage: 20'10 x 18'4 (6.35m x 5.59m)

Garage/Workshop: 18'6 x 17'3 (5.64m x 5.26m)

Off Road Parking



Main features

- Stunning detached house in highly desirable location
- Boasts 1.99 acres of land including fantastic gardens and grounds
- Only a short walk to the sea
- Quiet and secluded area
- Indoor swimming pool
- Detached double garage and additional workshop



Nearest Schools

Medmerry Primary 1.5 miles, Seal Primary, Selsey 1.7 miles, Sidlesham Primary 1.9 miles, Manhood Community College 1.4 miles, The Regis 4.4 miles, Chichester High School for Girls 5.2 miles, Chichester High School for Boys 5.3 miles



Transport Information

Train Stations: Bognor Regis 4.6 miles, Chichester 5.4 miles, Fishbourne 6.2 miles



Address

Rectory Lane, Selsey, Chichester, West Sussex, PO20



Directions

For directions to this property please contact us.



cubitt&west
Helping you move forwards

Call Chichester Branch 01243 786581 ■ cubittandwest.co.uk



■ Legal advice should be taken to verify fixtures/fittings, planning, alterations and/or lease details ■ Appliances & services are untested, dimensions are approximate and floor plans are not to scale
■ Through a Homewise Home For Life Plan people aged 60+ can secure this property for up to 59% less, by purchasing a Lifetime Lease.



40414916/20240229/KF/JH