



Guide Price
£235,000

Leasehold

2x  1x  1x 

**St. Christopher's Close,
Chichester, West
Sussex, PO19**

OVER 60?

Secure this property
for up to **59% less!**

cubitt&west
Helping you move forwards



Main features

- Bright & airy first floor apartment with loft space
- Open planned modern lounge/kitchen with integrated appliances
- Gated communal rear garden
- Allocated external storage & parking
- Plans in place to add a gate to the entrance (subject to consents)

Accommodation

FIRST FLOOR

Hallway

Lounge/Kitchen: 11'2 x 7'7 (3.41m x 2.31m) plus 13'3 into alcove x 16'9 (4.04m x 5.11m)

Bedroom 1: 11'10 x 9'5 (3.61m x 2.87m)

Bedroom 2: 9'5 x 8'8 (2.87m x 2.64m)

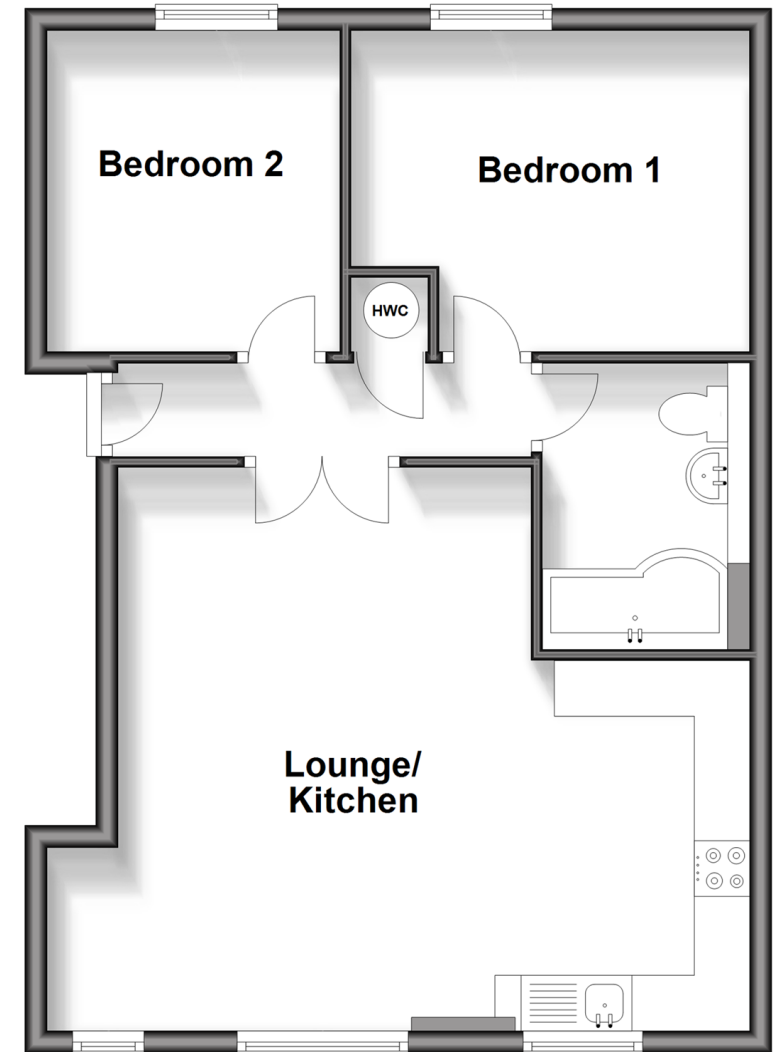
Bathroom

OUTSIDE

Allocated Parking
Allocated Storage
Communal Garden

First Floor

Approx. 54.2 sq. metres (583.3 sq. feet)



Call Chichester - 01243 786581 ■ cubittandwest.co.uk

- Legal advice should be taken to verify fixtures/fittings, planning, alterations and/or lease details
- Appliances & services are untested, dimensions are approximate and floor plans are not to scale
- Through a Homewise Home For Life Plan people aged 60+ can secure this property for up to 59% less, by purchasing a Lifetime Lease.

