



Guide Price
£190,000

Leasehold

2x  1x  1x 

**Harvester Close,
Chichester, West
Sussex, PO19**

OVER 60?

Secure this property
for up to **59% less!**

cubitt&west
Helping you move forwards



Main features

- Great sized second floor apartment with allocated parking
- Benefits from a long lease remaining
- Spacious living area - ideal for hosting friends & family
- Close to Chichester's city centre & local amenities
- Excellent public transport links

Accommodation

SECOND FLOOR

Hallway

Lounge: 14'0 x 11'10 (4.27m x 3.61m)

Kitchen: 9'7 x 6'2 (2.92m x 1.88m)

Bedroom 1: 10'2 x 8'11 (3.10m x 2.72m)

Bedroom 2: 9'4 x 7'9 at widest point (2.85m x 2.36m)

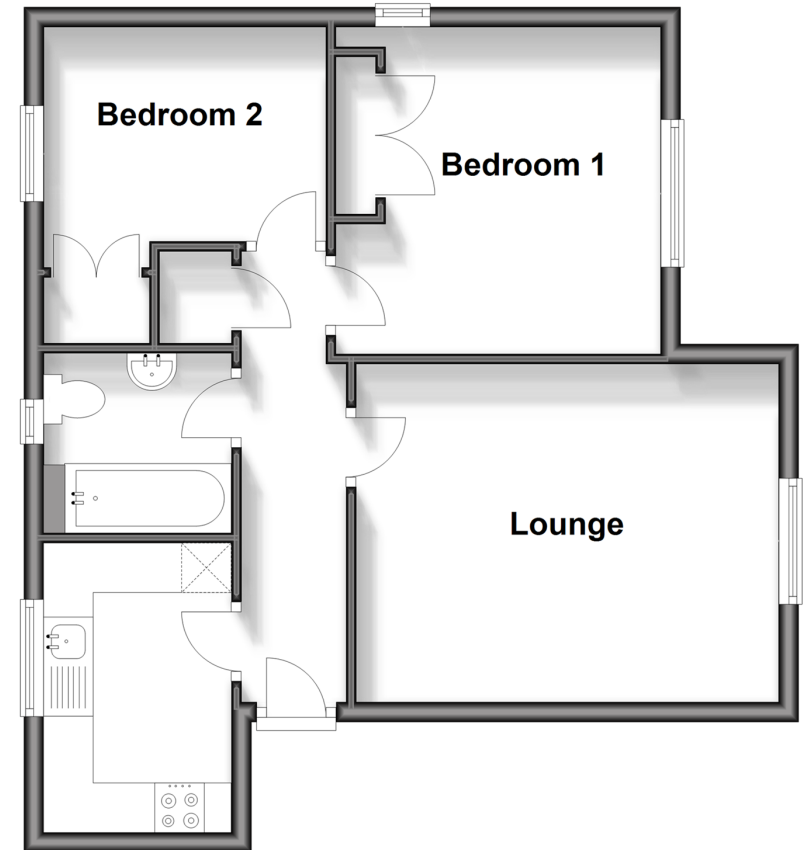
Bathroom: 6'4 x 5'11 (1.93m x 1.80m)

OUTSIDE

Allocated Parking

Second Floor

Approx. 49.0 sq. metres (527.0 sq. feet)



Call Chichester - 01243 786581 ■ cubittandwest.co.uk

- Legal advice should be taken to verify fixtures/fittings, planning, alterations and/or lease details
- Appliances & services are untested, dimensions are approximate and floor plans are not to scale
- Through a Homewise Home For Life Plan people aged 60+ can secure this property for up to 59% less, by purchasing a Lifetime Lease.



40414952/20240509/VB/VB