



Price
£460,000

Freehold

3x  2x  2x 

**South View, Mill Lane,
Runcton, Nr Chichester,
West Sussex, PO20**

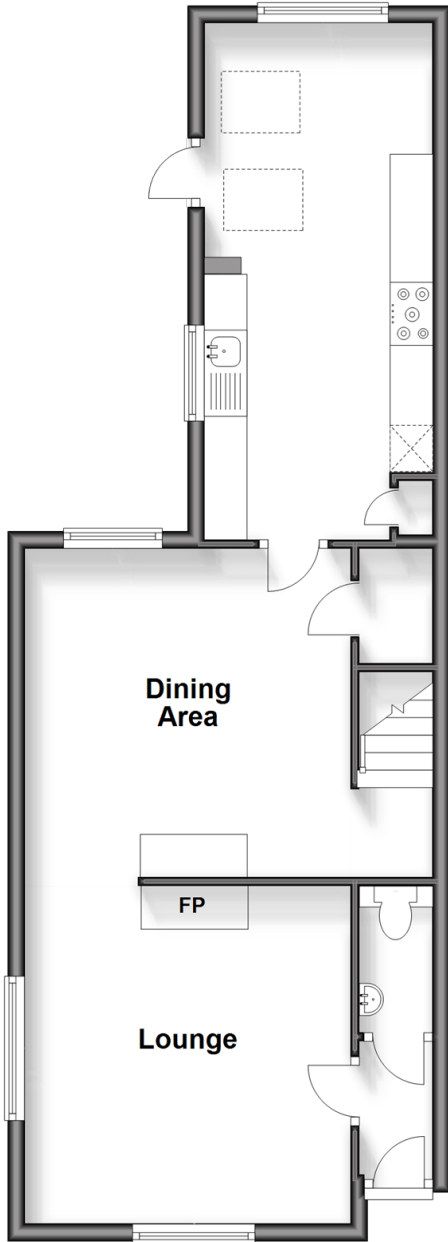
OVER 60?

Secure this property
for up to **59% less!**

cubitt&west
Helping you move forwards

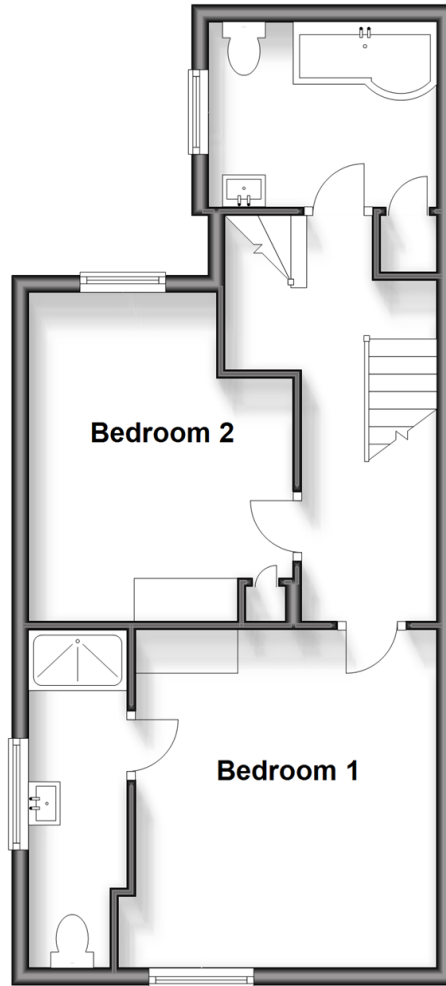
Ground Floor

Approx. 53.2 sq. metres (572.3 sq. feet)



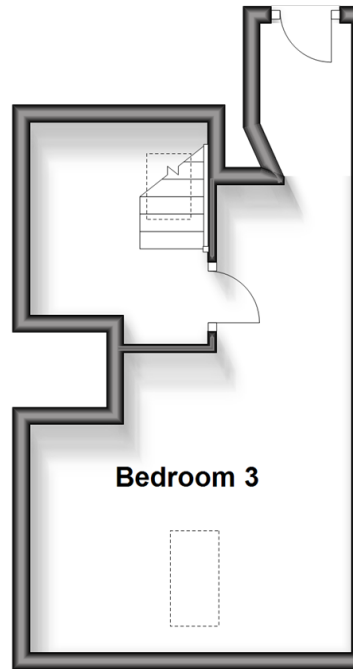
First Floor

Approx. 45.6 sq. metres (490.9 sq. feet)



Second Floor

Approx. 22.5 sq. metres (241.7 sq. feet)



Accommodation

GROUND FLOOR

Entrance Hall

Cloakroom: 5'5 x 2'11 (1.65m x 0.89m)

Lounge: 12'5 x 11'9 (3.79m x 3.58m)

Dining Area: 12'10 x 11'7 (3.91m x 3.53m)

Kitchen/Breakfast Area: 19'9 x 8'11 (6.02m x 2.72m)

FIRST FLOOR

Landing

Bedroom 1: 12'7 x 11'7 (3.84m x 3.53m)

En-Suite Shower Room: 10'4 x 3'8 (3.15m x 1.12m)

Bedroom 2: 11'7 maximum x 10'2 maximum (3.53m x 3.10m)

Bathroom: 8'9 x 7'0 (2.67m x 2.14m)

SECOND FLOOR

Landing

Bedroom 3: 17'9 up to eaves x 12'6 at widest point (5.41m x 3.81m)

OUTBUILDING

Garage

Room 1 (Seller Uses As Office)

OUTSIDE

Off Road Parking

Front & Rear Gardens



Main features

- Fantastic sized semi-detached house with period features
- Peaceful village location
- Cosy lounge with open log fire
- Modern kitchen with integrated appliances & ample storage
- Easy access into Chichester's city centre for shopping & restaurants
- Beautiful countryside walks close by



Nearest Schools

North Mundham Primary 0.4 miles, Kingsham Primary 1.3 miles, St Richard's Catholic Primary 1.7 miles, Chichester High School for Girls 1.5 miles, Chichester High School for Boys 1.6 miles, Chichester College 2.2 miles



Transport Information

Train Stations: Chichester 1.8 miles, Fishbourne 3.3 miles, Bognor Regis 3.7 miles



Address

South View, Mill Lane, Runcton, Nr Chichester, West Sussex, PO20



Directions

For directions to this property please contact us.



cubitt&west
Helping you move forwards

Call Chichester Branch 01243 786581 ■ cubittandwest.co.uk



■ Legal advice should be taken to verify fixtures/fittings, planning, alterations and/or lease details ■ Appliances & services are untested, dimensions are approximate and floor plans are not to scale
■ Through a Homewise Home For Life Plan people aged 60+ can secure this property for up to 59% less, by purchasing a Lifetime Lease.



40414973/20240403/RC/VB