

OVER 60?

Secure this property
for up to **59% less!**



Price

£300,000

Leasehold

2x  1x  1x 

Fletcher House, Fletcher Avenue,
Chichester, West Sussex, PO19

cubitt&west
Helping you move forwards



Main features

- **Spacious first floor apartment close to the city centre**
- **Located in the highly sought-after Roussillon Park development**
- **Benefits from allocated parking**
- **Stunning views over the communal green**
- **Offered chain free**
- **Only a short walk to the shops, GP surgery & Chichester's Festival Theatre**
- **Excellent public transport links**
- **Bright & spacious accommodation throughout**

Accommodation

FIRST FLOOR

Hallway

Lounge/Kitchen/Diner: 22'7 x 9'11 (6.89m x 3.02m)

Bedroom 1: 16'7 x 9'0 (5.06m x 2.75m)

Bedroom 2: 9'10 x 9'8 (3.00m x 2.95m)

Bathroom

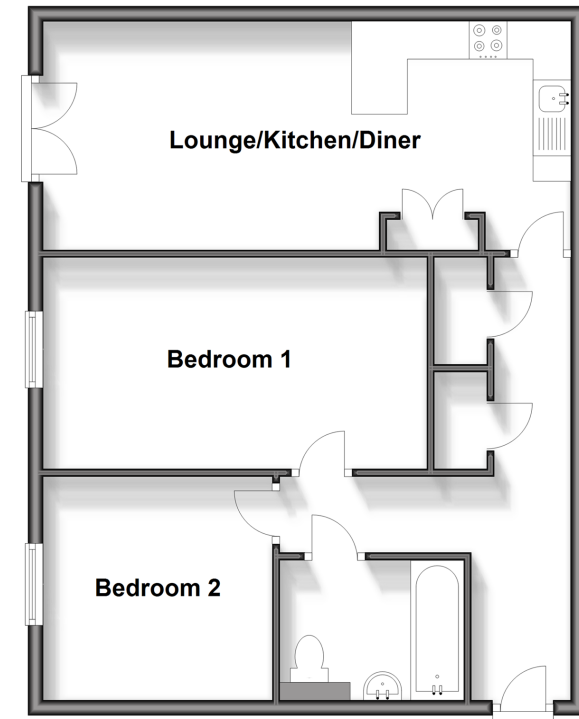
OUTSIDE

Allocated Parking

Communal Grounds

First Floor

Approx. 62.3 sq. metres (670.7 sq. feet)



Call Chichester - 01243 786581 ■ cubittandwest.co.uk

■ Legal advice should be taken to verify fixtures/fittings, planning, alterations and/or lease details
 ■ Through a Homewise Home For Life Plan people aged 60+ can secure this property for up to 59% less, by purchasing a Lifetime Lease.

■ Appliances & services are untested, dimensions are approximate and floor plans are not to scale



40414998/20240504/KF/JH