



Price
£425,000

Freehold

3x  1x  1x 

**Castle Road, Southwick,
Nr Fareham, Hampshire,
PO17**

OVER 60?

Secure this property
for up to **59% less!**

cubitt&west
Helping you move forwards



Main features

- Substantially extended end of terrace home
- Open plan living accommodation throughout the ground floor
- High quality fixtures
- Impressive large rear garden
- Sought after cul-de-sac location in a popular village

Accommodation

GROUND FLOOR

Entrance Hallway

Lounge: 21'4 x 17'4 (6.51m x 5.29m)

Kitchen/Breakfast Room: 13'9 x 11'6 (4.19m x 3.51m)

Utility Room: 11'0 x 6'2 (3.36m x 1.88m)

Cloakroom

FIRST FLOOR

Landing

Bedroom 1: 14'0 x 9'10 (4.27m x 3.00m)

Bedroom 2: 11'0 x 10'0 (3.36m x 3.05m)

Bedroom 3: 22'5 x 6'3 (6.84m x 1.91m)

Bathroom: 13'4 x 7'1 (4.07m x 2.16m)

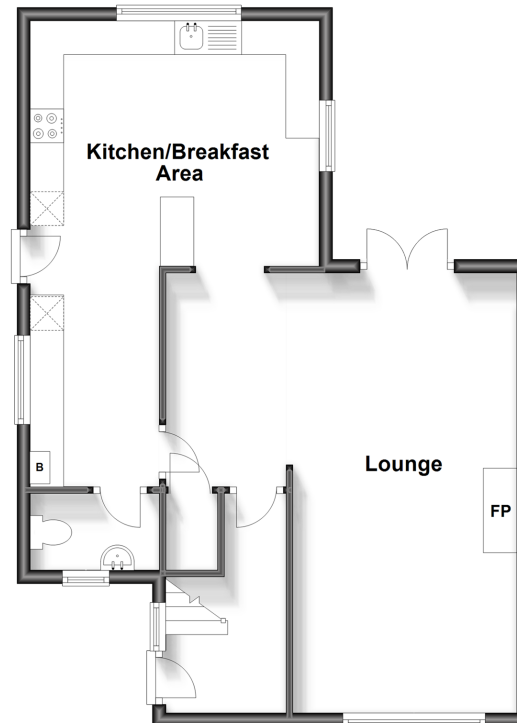
OUTSIDE

Driveway

Large Rear Garden

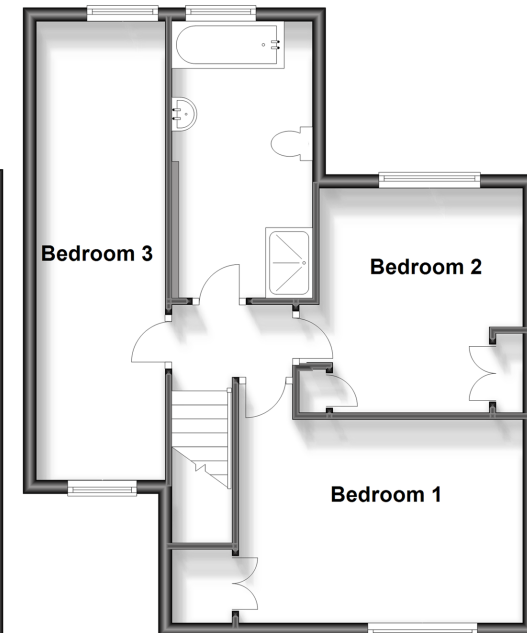
Ground Floor

Approx. 59.2 sq. metres (637.5 sq. feet)



First Floor

Approx. 52.8 sq. metres (567.9 sq. feet)



Call Portsmouth - 023 9266 1213 ■ cubittandwest.co.uk

■ Legal advice should be taken to verify fixtures/fittings, planning, alterations and/or lease details
 ■ Through a Homewise Home For Life Plan people aged 60+ can secure this property for up to 59% less, by purchasing a Lifetime Lease.

■ Appliances & services are untested, dimensions are approximate and floor plans are not to scale



40716124/20231019/JT/MH