



**Price**  
**£340,000**

**Freehold**

3x  1x  1x 

**Hildon Close, Worthing,  
West Sussex, BN13**

**OVER 60?**

Secure this property  
for up to **59% less!**

**cubitt&west**  
Helping you move forwards





## Main features

- Lovely light and spacious property in a Cul-De-Sac location
- Kitchen/breakfast room
- Close to local transport links
- Great catchment area for both primary and secondary schools

## Accommodation

### GROUND FLOOR

Hallway

Cloakroom

Lounge: 15'7 x 11'5 (4.75m x 3.48m)

Kitchen: 18'0 x 9'5 (5.49m x 2.87m)

Conservatory: 12'3 x 9'8 (3.74m x 2.95m)

### FIRST FLOOR

Landing

Bedroom 1: 14'5 x 9'6 (4.40m x 2.90m)

Bedroom 2: 14'8 x 8'7 (4.47m x 2.62m)

Bedroom 3: 8'7 x 6'9 (2.62m x 2.06m)

Bathroom/Shower Room

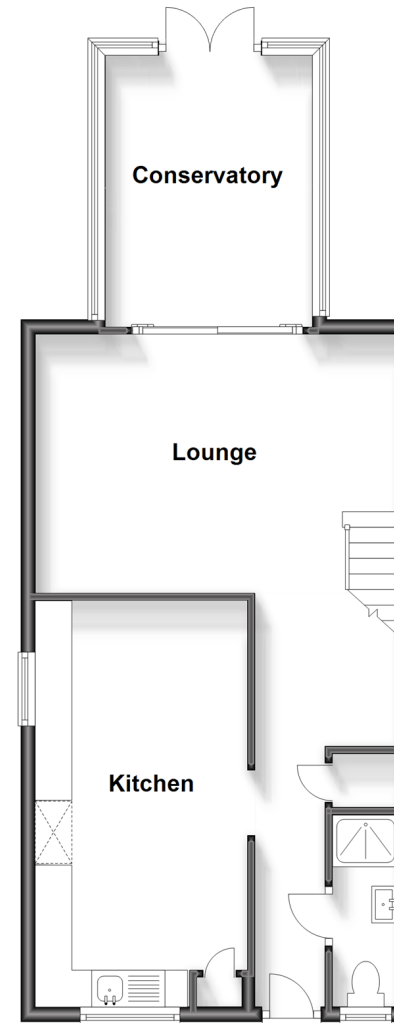
### OUTSIDE

Front & Rear Gardens

Private Driveway

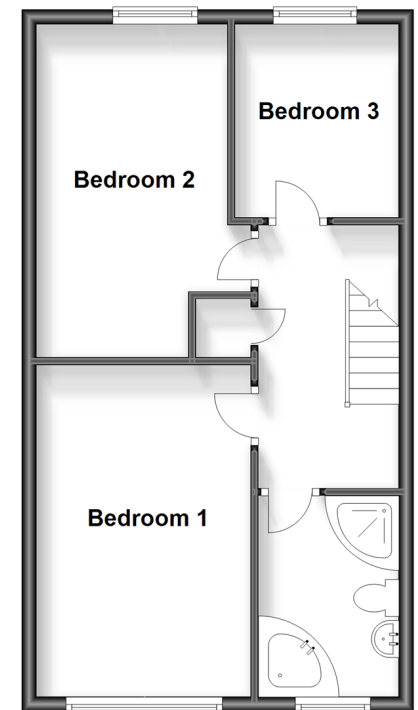
### Ground Floor

Approx. 55.9 sq. metres (601.9 sq. feet)



### First Floor

Approx. 45.2 sq. metres (486.8 sq. feet)



**Call Worthing - 01903 700657 ■ [cubittandwest.co.uk](http://cubittandwest.co.uk)**

- Legal advice should be taken to verify fixtures/fittings, planning, alterations and/or lease details
- Appliances & services are untested, dimensions are approximate and floor plans are not to scale
- Through a Homewise Home For Life Plan people aged 60+ can secure this property for up to 59% less, by purchasing a Lifetime Lease.



40807185/20231006/SRF/JS