



Price

£700,000

Freehold

3x  2x  2x 

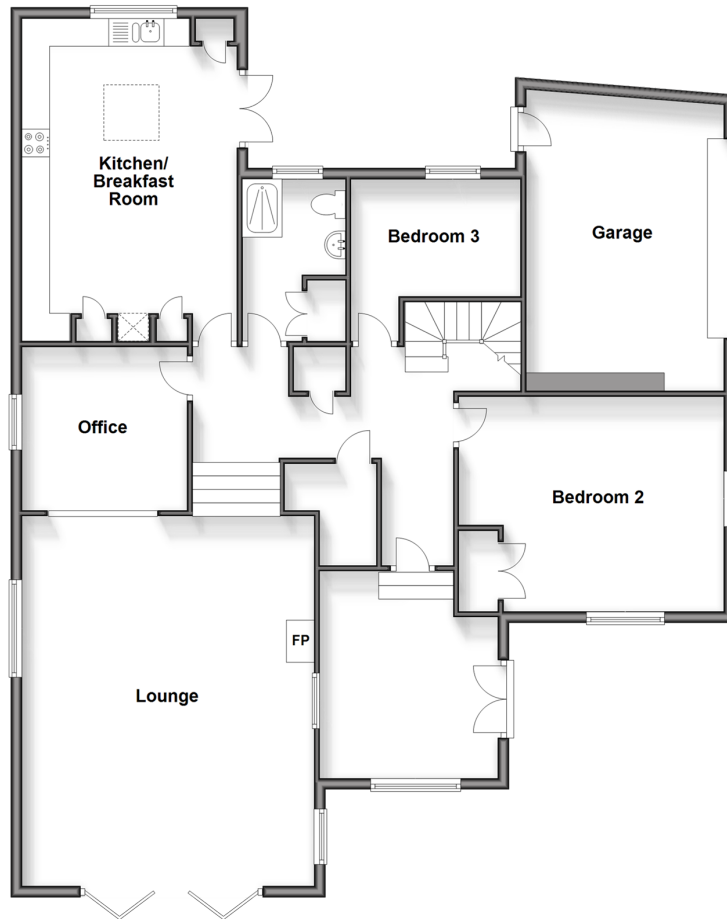
**Woodland Avenue,
Worthing, West Sussex,
BN13**

OVER 60?

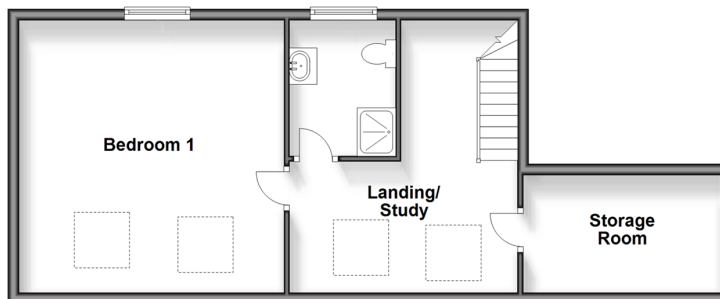
Secure this property
for up to **59% less!**

cubitt&west
Helping you move forwards

Split Level Ground Floor
Approx. 151.7 sq. metres (1633.3 sq. feet)



First Floor
Approx. 52.2 sq. metres (561.4 sq. feet)



Accommodation

SPLIT LEVEL GROUND FLOOR

Vestibule : 12'4 x 10'9 (3.76m x 3.28m)

Entrance Hall

Lounge: 22'3 x 17'5 (6.79m x 5.31m)

Office: 9'8 x 9'2 (2.95m x 2.80m)

Kitchen/Breakfast Room: 18'9 x 12'5 (5.72m x 3.79m)

Bedroom 2: 15'8 x 13'2 (4.78m x 4.02m)

Bedroom 3: 10'2 x 7'8 (3.10m x 2.34m)

Shower Room/WC

FIRST FLOOR

Landing/Study Area: 13'5 x 11'2 (4.09m x 3.41m)

Bedroom 1: 16'10 x 15'6 (5.13m x 4.73m)

Shower Room/WC

OUTSIDE

Private Driveway

Double Garage

Gardens To 3 Sides

Rear Courtyard



Main features

- Superb extended property in a very sought after area of Worthing
- Light and spacious rooms
- Views over Worthing from main bedroom
- Stunning landscaped gardens surrounding the property
- Parking for several vehicles



Nearest Schools

Primary Schools: Vale First and Middle School, Worthing 0.3 miles, Durrington Middle School 0.6 miles, Thomas A Becket Middle School 1.3 miles
Secondary Schools: Durrington High School 1.1 miles, Oak Grove College 1.1 miles, Worthing High School 1.7 miles



Transport Information

Train Stations: West Worthing 1.8 miles, Durrington-on-Sea 1.8 miles, Worthing 2.1 miles



Address

Woodland Avenue, Worthing, West Sussex, BN13



Directions

For directions to this property please contact us.



cubitt&west
Helping you move forwards

Call Worthing Branch 01903 700657 ■ cubittandwest.co.uk



■ Legal advice should be taken to verify fixtures/fittings, planning, alterations and/or lease details ■ Appliances & services are untested, dimensions are approximate and floor plans are not to scale
■ Through a Homewise Home For Life Plan people aged 60+ can secure this property for up to 59% less, by purchasing a Lifetime Lease.



40807230/20240311/SRF/JS