



Price
£370,000

Freehold

2x  1x  1x 

**Eirene Road, Worthing,
West Sussex, BN12**

cubitt&west
Helping you move forwards



Main features

- Freehold apartment in a superb location
- Lovely light and spacious rooms
- Sunny aspect lounge
- Private garden
- Located across the road from the seafront
- Excellent transport links

Accommodation

FIRST FLOOR

Entrance Hallway

Lounge: 16'1 x 15'6 (4.91m x 4.73m)

Kitchen : 12'3 x 9'8 (3.74m x 2.95m)

Bedroom 1: 12'11 x 11'9 (3.94m x 3.58m)

Bedroom 2: 11'9 x 10'7 (3.58m x 3.23m)

Bathroom

Separate WC

OUTSIDE

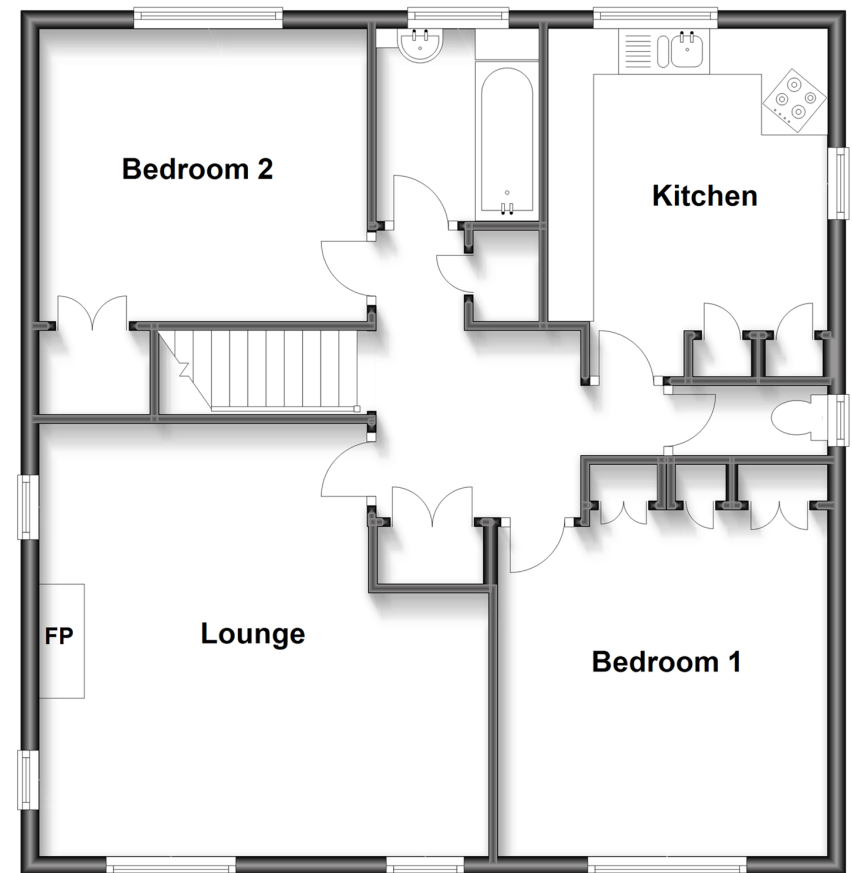
Garage

Driveway

Private Rear Garden

First Floor

Approx. 78.6 sq. metres (845.7 sq. feet)



Call West Worthing - 01903 700657 ■ cubittandwest.co.uk

- Legal advice should be taken to verify fixtures/fittings, planning, alterations and/or lease details
- Appliances & services are untested, dimensions are approximate and floor plans are not to scale