



**Price**

**£275,000**

**Leasehold**

1x  1x  1x 

**Hawke House, Eirene  
Road, Worthing, BN12**

**OVER 60?**

Secure this property  
for up to **59% less!**



**Video Tour available**

**cubitt&west**  
Helping you move forwards





## Main features

- Delightful apartment just off the seafront
- Juliette balcony off lounge
- Double bedroom with built in wardrobes
- Underground parking
- Beautifully presented
- Communal gardens

## Accommodation

### FIRST FLOOR

Entrance Hall

Lounge: 15'0 x 12'6 (4.58m x 3.81m)

Kitchen: 9'8 x 8'6 (2.95m x 2.59m)

Balcony

Bedroom : 15'3 x 9'4 (4.65m x 2.85m)

Bathroom

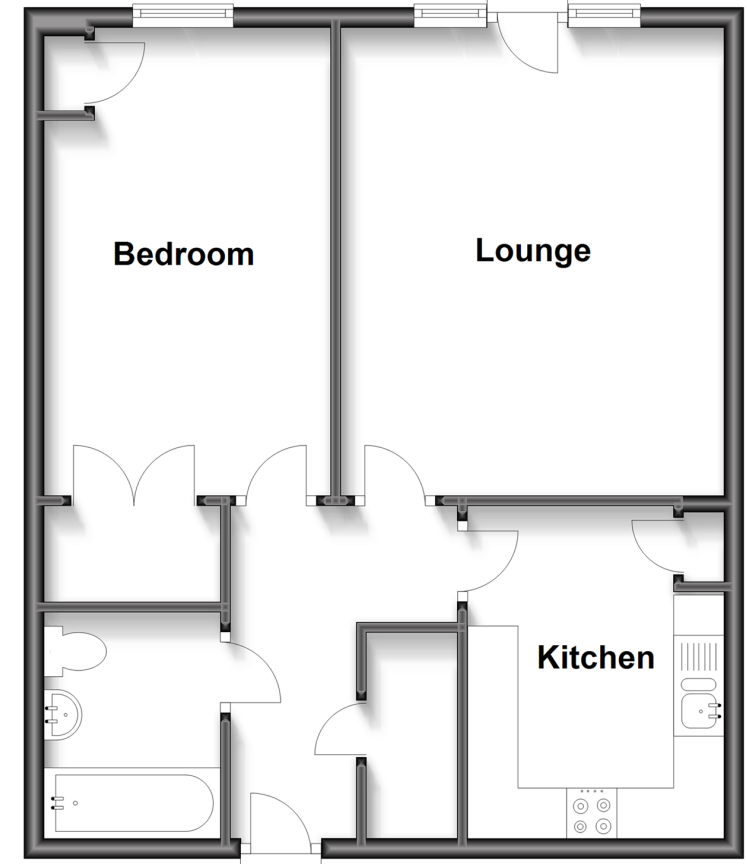
### OUTSIDE

Underground Parking

Communal Gardens

## First Floor

Approx. 54.3 sq. metres (584.3 sq. feet)



**Call West Worthing - 01903 700657 ■ [cubittandwest.co.uk](http://cubittandwest.co.uk)**

- Legal advice should be taken to verify fixtures/fittings, planning, alterations and/or lease details
- Appliances & services are untested, dimensions are approximate and floor plans are not to scale
- Through a Homewise Home For Life Plan people aged 60+ can secure this property for up to 59% less, by purchasing a Lifetime Lease.



40903028/20230713/SRF/SC