



OVER 60?

Secure this property
for up to **59% less!**

Guide Price
£235,000

Leasehold

2x  1x  1x 

**Greentrees, Lansdowne
Road, Worthing, West
Sussex, BN11**

cubitt&west
Helping you move forwards



Main features

- **Spacious ground floor flat**
- **Allocated parking space & communal gardens**
- **Long lease & no ground rent**
- **Close to shops, train station, seafront, bus services and other amenities**
- **No onward chain**

Accommodation

GROUND FLOOR

Lounge: 17'0 into bay x 11'8 (5.19m x 3.56m)

Kitchen : 12'3 x 5'9 (3.74m x 1.75m)

Bathroom

Bedroom 1: 12'5 x 11'8 (3.79m x 3.56m)

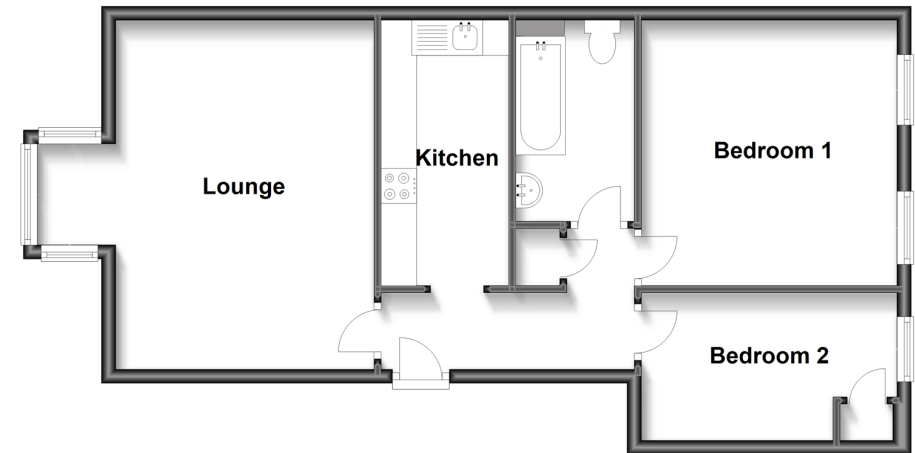
Bedroom 2: 12'4 x 6'8 (3.76m x 2.03m)

OUTSIDE

Communal Gardens

Allocated Parking Space

Ground Floor
Approx. 59.8 sq. metres (643.2 sq. feet)



Call West Worthing - 01903 700657 ■ cubittandwest.co.uk

■ Legal advice should be taken to verify fixtures/fittings, planning, alterations and/or lease details
 ■ Through a Homewise Home For Life Plan people aged 60+ can secure this property for up to 59% less, by purchasing a Lifetime Lease.

■ Appliances & services are untested, dimensions are approximate and floor plans are not to scale