

OVER 60?

Secure this property
for up to **59% less!**



Video Tour available

Guide Price
£500,000
Freehold

3x 2x 1x

Greentrees Crescent, Sompting, Lancing,
West Sussex, BN15

cubitt&west
Helping you move forwards



Main features

- Beautiful detached bungalow in sought after area
- Ample parking
- Walking distance to shops and restaurants
- Rear garden with bar/gym area
- Close to transport links

Accommodation

GROUND FLOOR

Entrance Hallway

Lounge: 25'6 x 12'7 (7.78m x 3.84m)

Kitchen/Diner: 22'3 x 9'7 (6.79m x 2.92m)

Shower Room

Bedroom 1: 12'6 up to fitted wardrobes x 9'0 (3.81m x 2.75m)

En suite: 8'3 x 5'3 (2.52m x 1.60m)

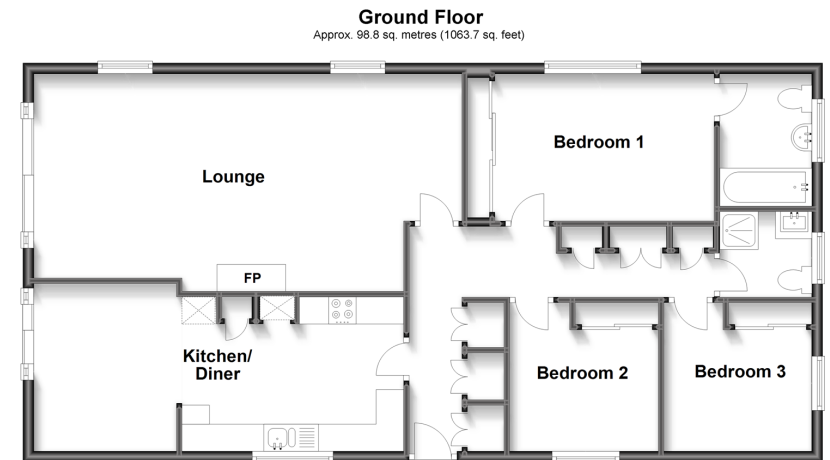
Bedroom 2: 9'0 x 7'8 up to fitted wardrobes (2.75m x 2.34m)

Bedroom 3: 8'9 x 8'0 up to fitted wardrobes (2.67m x 2.44m)

OUTSIDE

Front & Rear Gardens

Driveway & Garage



Call West Worthing - 01903 700657 ■ cubittandwest.co.uk

■ Legal advice should be taken to verify fixtures/fittings, planning, alterations and/or lease details
 ■ Through a Homewise Home For Life Plan people aged 60+ can secure this property for up to 59% less, by purchasing a Lifetime Lease.

■ Appliances & services are untested, dimensions are approximate and floor plans are not to scale