



Price
£235,000

Freehold

3x  1x  1x 

**Greenway Road, Elson,
Gosport, Hampshire,
PO12**

OVER 60?

Secure this property
for up to **59% less!**

cubitt&west
Helping you move forwards



Main features

- Well presented home, ideal for first time buyers and home movers
- Off-street parking for multiple cars
- Sunny aspect rear garden, perfect for a family
- Central location with great travel links
- Potential to further develop, subject to planning

Accommodation

GROUND FLOOR

Entrance Hallway

Lounge: 12'11 x 12'0 (3.94m x 3.66m)

Kitchen: 11'8 x 8'5 (3.56m x 2.57m)

Bathroom

Front Garden

Driveway

Rear Garden

FIRST FLOOR

Landing

Bedroom 1: 11'10 x 11'4 (3.61m x 3.46m)

Study: 7'8 x 6'11 (2.34m x 2.11m)

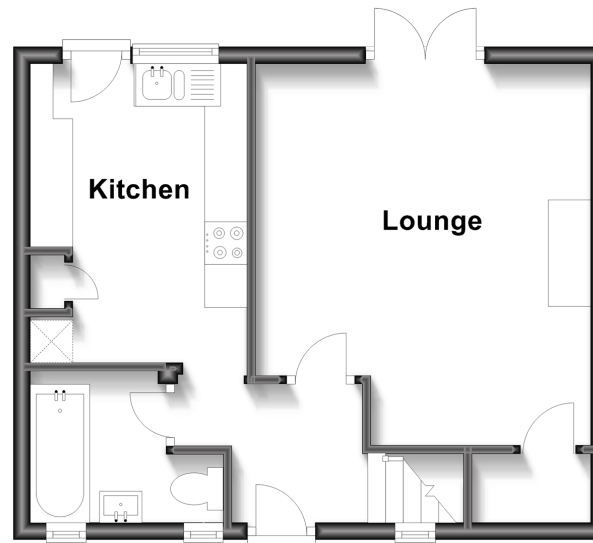
Bedroom 2: 10'9 x 7'7 (3.28m x 2.31m)

Bedroom 3: 10'3 x 6'11 (3.13m x 2.11m)

OUTSIDE

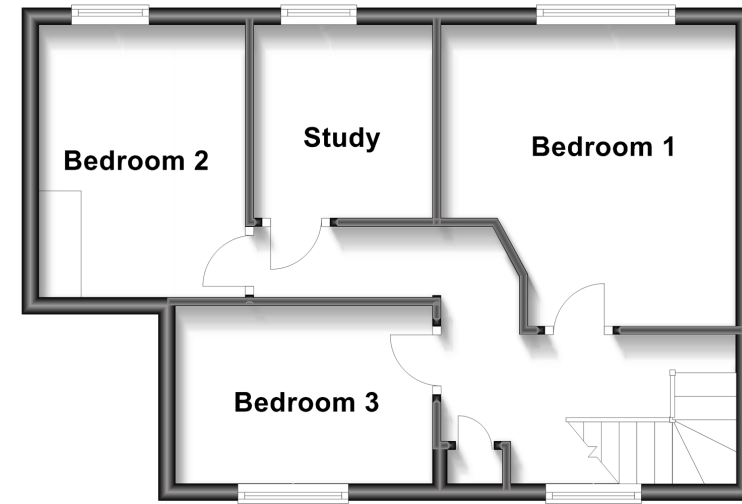
Ground Floor

Approx. 35.7 sq. metres (383.8 sq. feet)



First Floor

Approx. 40.8 sq. metres (439.3 sq. feet)



Call Portsmouth - 023 9266 1213 ■ cubittandwest.co.uk

■ Legal advice should be taken to verify fixtures/fittings, planning, alterations and/or lease details
 ■ Through a Homewise Home For Life Plan people aged 60+ can secure this property for up to 59% less, by purchasing a Lifetime Lease.

■ Appliances & services are untested, dimensions are approximate and floor plans are not to scale



41016155/20230704/ZMG/MH