



Price
£400,000

Freehold

3x  1x  2x 

**Penk Ridge, Havant,
Hampshire, PO9**

OVER 60?

Secure this property
for up to **59% less!**

cubitt&west
Helping you move forwards



Main features

- Lovely family home situated in the highly sought after area of Bedhampton
- Extended to the rear creating a larger kitchen
- Sun room overlooking the beautiful landscaped rear garden
- Spacious lounge/diner
- Close to all local amenities

Accommodation

GROUND FLOOR

Hallway

Lounge/Diner: (L-shaped) 15'5 x 12'2 (4.70m x 3.71m) plus 9'3 x 10'2 (2.82m x 3.10m)

Kitchen: 16'6 x 8'7 (5.03m x 2.62m)

Sun Room: 12'2 x 10'2 (3.71m x 3.10m)

FIRST FLOOR

Landing

Bedroom 1: 13'6 x 9'9 (4.12m x 2.97m)

Bedroom 2: 12'3 x 11'8 (3.74m x 3.56m)

Bedroom 3: 9'9 x 8'3 (2.97m x 2.52m)

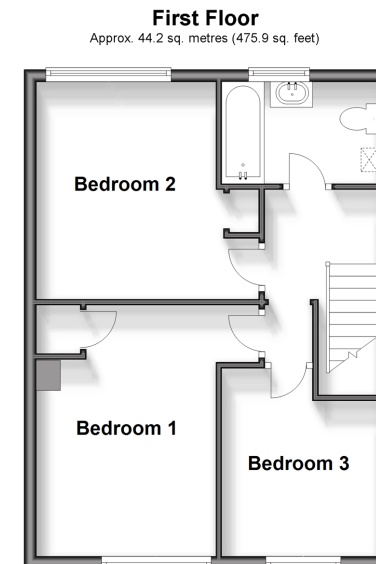
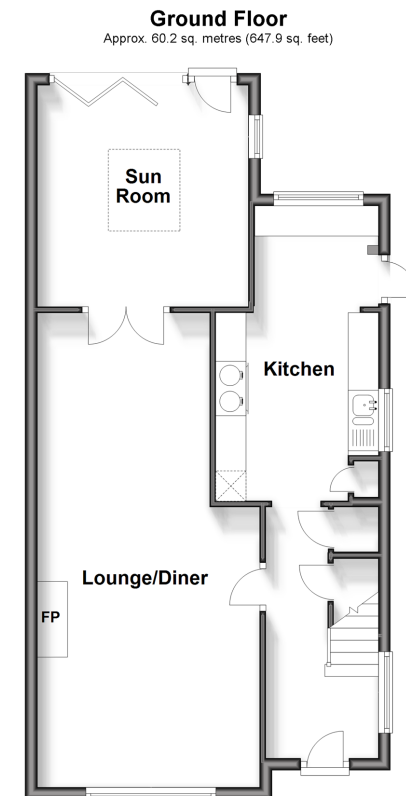
Bathroom

OUTSIDE

Front and Rear Garden

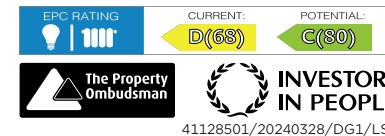
Cabin/Office: 9'6 x 9'4 (2.90m x 2.85m)

Driveway



Call Havant - 023 92492708 ■ cubittandwest.co.uk

- Legal advice should be taken to verify fixtures/fittings, planning, alterations and/or lease details
- Appliances & services are untested, dimensions are approximate and floor plans are not to scale
- Through a Homewise Home For Life Plan people aged 60+ can secure this property for up to 59% less, by purchasing a Lifetime Lease.



41128501/20240328/DG1/LS1