



OVER 60?

Secure this property
for up to **59% less!**

Price

£400,000

Freehold

4x  1x  1x 

**Portsdown Hill Road,
Havant, Hampshire, PO9**

cubitt&west
Helping you move forwards



Main features

- **Lovely family home situated in a popular location**
- **Beautifully presented with flexible living accommodation**
- **Spacious and bright throughout**
- **Close to amenities and travel links**
- **Garage and off road parking**

Accommodation

GROUND FLOOR

Hallway

Lounge: 20'11 x 15'9 (6.38m x 4.80m)

Study: 7'6 x 7'4 (2.29m x 2.24m)

Kitchen: (L-shaped) 12'7 x 11'4 (3.84m x 3.46m) plus 10'1 x 4'3 (3.08m x 1.30m)

Cloakroom

Sitting Room: 12'4 x 9'2 (3.76m x 2.80m)
(seller uses as a bedroom)

FIRST FLOOR

Landing

Bedroom 1: 15'8 x 12'2 (4.78m x 3.71m)

Bedroom 2: 12'5 x 8'9 (3.79m x 2.67m)

Bedroom 3: 11'2 x 9'9 (3.41m x 2.97m)

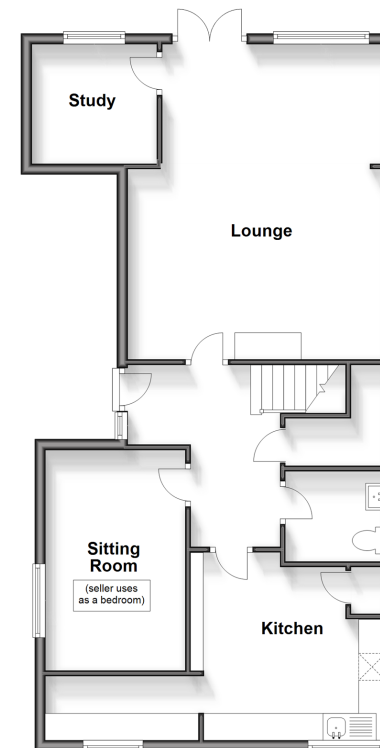
Bathroom

OUTSIDE

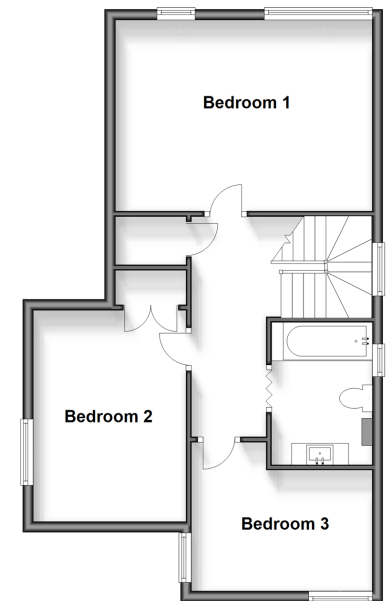
Front and Rear Garden

Garage and Off Road Parking

Ground Floor
Approx. 75.2 sq. metres (809.9 sq. feet)



First Floor
Approx. 55.8 sq. metres (600.9 sq. feet)



Call Havant - 023 92492708 ■ cubittandwest.co.uk

■ Legal advice should be taken to verify fixtures/fittings, planning, alterations and/or lease details
■ Through a Homewise Home For Life Plan people aged 60+ can secure this property for up to 59% less, by purchasing a Lifetime Lease.

■ Appliances & services are untested, dimensions are approximate and floor plans are not to scale



41129222/20240411/DG1/EC