



OVER 60?

Secure this property
for up to **59% less!**

Price

£230,000

Freehold

3x  1x  1x 

**Walmer Road,
Portsmouth, Hampshire,
PO1**

cubitt&west
Helping you move forwards



Main features

- Well proportioned terraced house, perfect for first time buyers and investors
- Upstairs bathroom
- Extended kitchen and dining space
- Private enclosed rear garden
- Close to the train station and shops, offering convenient living

Accommodation

GROUND FLOOR

Entrance Hallway

Lounge: 13'4 x 12'0 (4.07m x 3.66m)

Kitchen/Diner: 24'0 x 9'11 (7.32m x 3.02m)

FIRST FLOOR

Landing

Bedroom 1: 13'3 x 12'8 (4.04m x 3.86m)

Bedroom 2: 12'8 x 9'2 (3.86m x 2.80m)

Bedroom 3: 7'1 x 6'2 (2.16m x 1.88m)

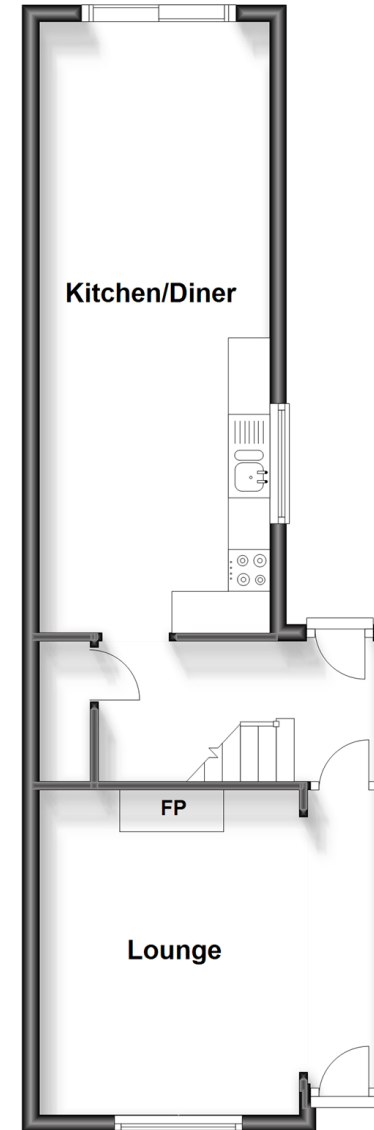
Bathroom

OUTSIDE

Rear Garden

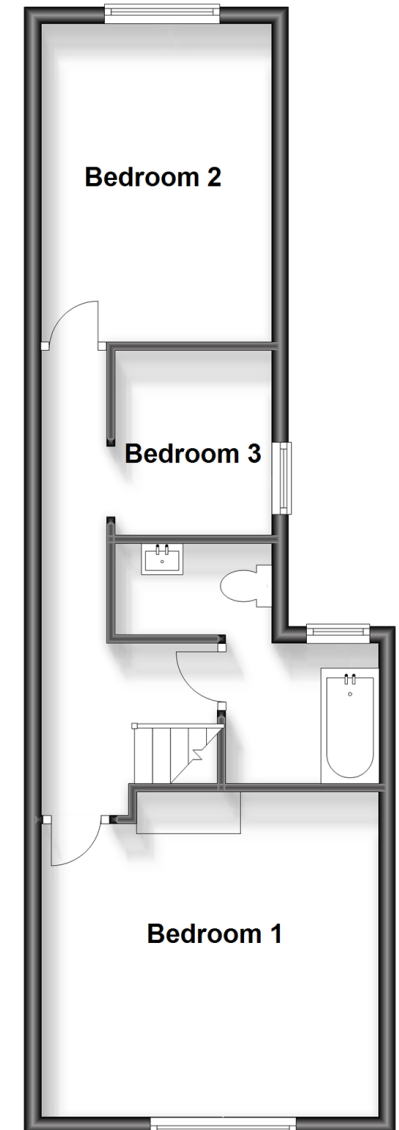
Ground Floor

Approx. 43.3 sq. metres (466.4 sq. feet)



First Floor

Approx. 43.7 sq. metres (470.2 sq. feet)



Call Portsmouth - 023 9266 1213 ■ cubittandwest.co.uk

- Legal advice should be taken to verify fixtures/fittings, planning, alterations and/or lease details
- Appliances & services are untested, dimensions are approximate and floor plans are not to scale
- Through a Homewise Home For Life Plan people aged 60+ can secure this property for up to 59% less, by purchasing a Lifetime Lease.



41618452/20231016/ZMG/MH