



Price
£300,000

Freehold

3x  2x  1x 

**Wykeham Road, North
End, Portsmouth, Hants,
PO2**

OVER 60?

Secure this property
for up to **59% less!**

cubitt & west
Helping you move forwards



Main features

- **Spacious family home in central Portsmouth**
- **Open plan living accommodation on the ground floor**
- **Low maintenance rear garden**
- **Bedroom one benefits from a dressing room in loft**
- **Additional shower room and utility space on the ground floor**

Accommodation

GROUND FLOOR

Entrance Hallway

Lounge/Diner: 19'7 x 13'1 (5.97m x 3.99m)

Shower Room

Kitchen: 13'0 x 9'3 (3.97m x 2.82m)

FIRST FLOOR

Landing

Bedroom 1: 13'1 x 11'10 (3.99m x 3.61m)

Bedroom 2: 13'5 x 9'3 (4.09m x 2.82m)

Bedroom 3: 11'8 x 8'0 (3.56m x 2.44m)

Bathroom

SECOND FLOOR

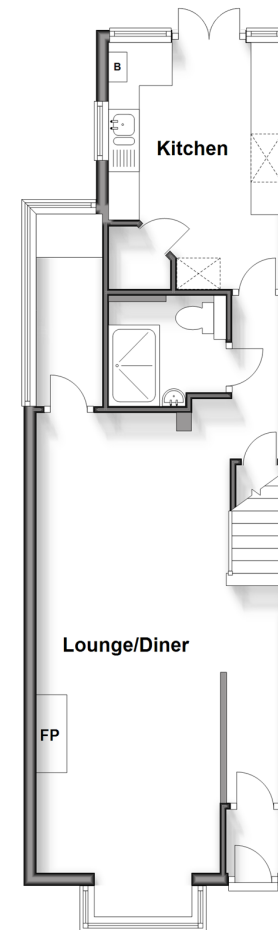
Loft Area: 14'7 x 6'6 (4.45m x 1.98m)

OUTSIDE

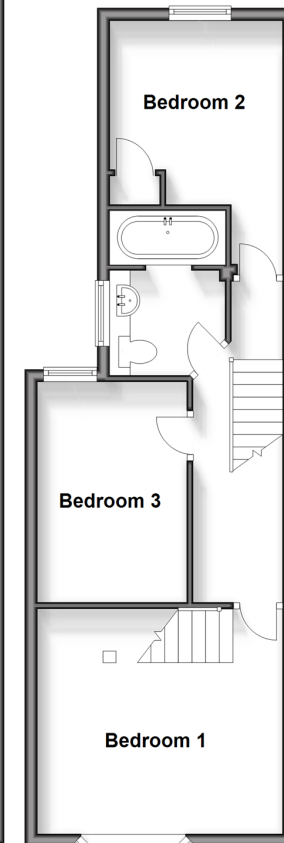
Front Forecourt

Rear Garden

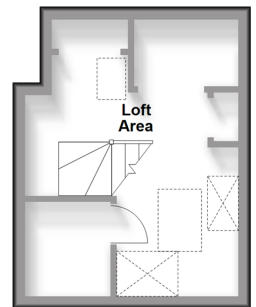
Ground Floor
Approx. 46.4 sq. metres (499.5 sq. feet)



First Floor
Approx. 45.5 sq. metres (489.7 sq. feet)



Second Floor
Approx. 14.9 sq. metres (160.1 sq. feet)



Call Portsmouth - 023 9266 1213 ■ cubittandwest.co.uk

- If buying to let, the energy rating will need to be improved to at least 'E' rating before you can let the property
- Legal advice should be taken to verify fixtures/fittings, planning, alterations and/or lease details
- Appliances & services are untested, dimensions are approximate and floor plans are not to scale
- Through a Homewise Home For Life Plan people aged 60+ can secure this property for up to 59% less, by purchasing a Lifetime Lease.



41619163/20240507/MO1/MH