



Price
£270,000

Freehold

3x  1x  2x 

**Seagrove Road,
Portsmouth, Hampshire,
PO2**

OVER 60?

Secure this property
for up to **59% less!**

cubitt&west
Helping you move forwards



Main features

- On street residents permit parking
- Excellent access in and out of the city
- Great school catchment area
- Low maintenance sunny aspect rear garden
- Immaculately presented throughout

Accommodation

GROUND FLOOR

Entrance Hallway

Lounge: 13'6 x 9'9 (4.12m x 2.97m)

Kitchen: 12'3 x 7'5 (3.74m x 2.26m)

Cloakroom

Dining Room: 14'11 x 8'9 (4.55m x 2.67m)

FIRST FLOOR

Landing

Bedroom 1: 14'5 x 11'7 (4.40m x 3.53m)

Bedroom 2: 11'9 x 7'4 (3.58m x 2.24m)

Bedroom 3: 9'5 x 8'9 (2.87m x 2.67m)

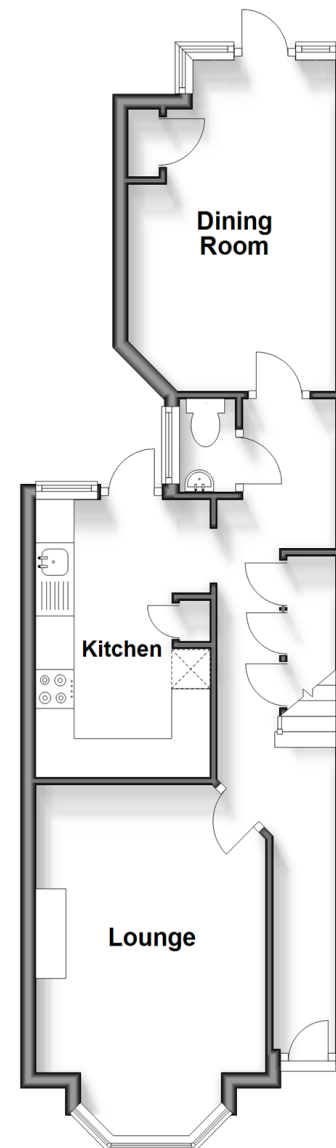
Bathroom

OUTSIDE

Rear Garden

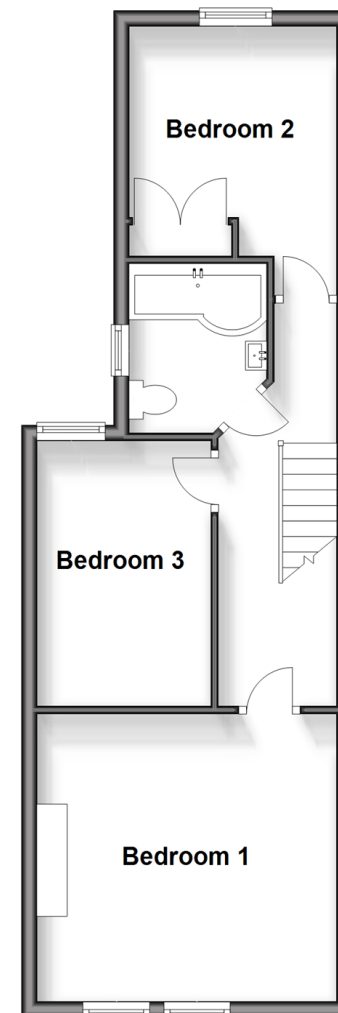
Ground Floor

Approx. 43.2 sq. metres (464.7 sq. feet)



First Floor

Approx. 42.8 sq. metres (460.5 sq. feet)



Call Portsmouth - 023 9266 1213 ■ cubittandwest.co.uk

- Legal advice should be taken to verify fixtures/fittings, planning, alterations and/or lease details
- Appliances & services are untested, dimensions are approximate and floor plans are not to scale
- Through a Homewise Home For Life Plan people aged 60+ can secure this property for up to 59% less, by purchasing a Lifetime Lease.

