

OVER 60?

Secure this property
for up to **59% less!**

Price
£225,000

Freehold

3x  1x  1x 

**London Avenue, North
End, Portsmouth,
Hampshire, PO2**

cubitt&west
Helping you move forwards



Main features

- Spacious mid-terrace home, well proportioned throughout
- Open-plan living accommodation on ground floor
- Private rear garden with pond
- Central location, close to schools and shops
- A Great option for first time buyers and investors

Accommodation

GROUND FLOOR

Entrance Hallway

Lounge/Dining Room: 25'6 x 13'0 (7.78m x 3.97m)

Bathroom

Kitchen: 12'8 x 8'3 (3.86m x 2.52m)

FIRST FLOOR

Landing

Bedroom 1: 12'0 x 10'7 (3.66m x 3.23m)

Bedroom 2: 10'8 x 9'8 (3.25m x 2.95m)

Bedroom 3: 10'8 x 8'4 (3.25m x 2.54m)

OUTSIDE

Front Forecourt

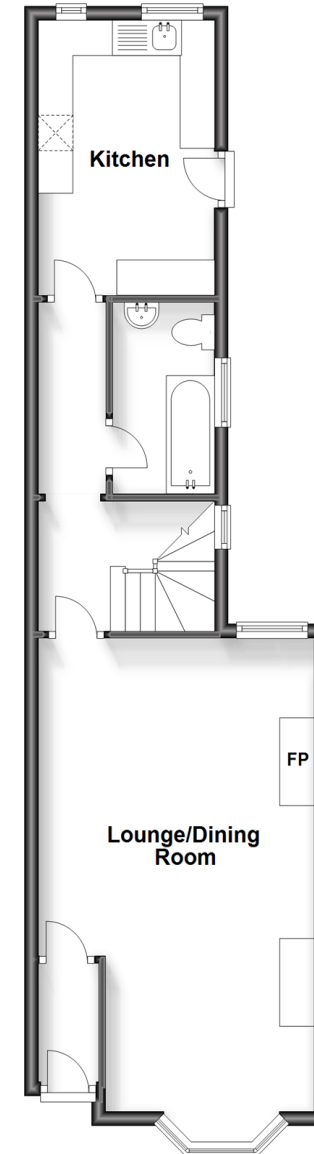
Rear Garden

Pond

Shed

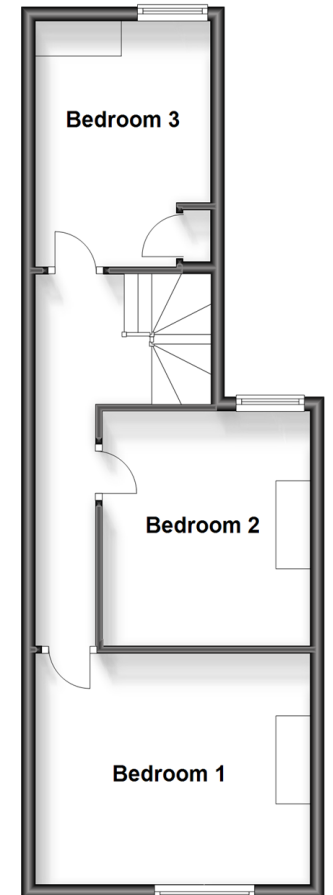
Ground Floor

Approx. 49.1 sq. metres (528.3 sq. feet)



First Floor

Approx. 41.0 sq. metres (441.8 sq. feet)



Call Portsmouth - 023 9266 1213 ■ cubittandwest.co.uk

- Legal advice should be taken to verify fixtures/fittings, planning, alterations and/or lease details
- Appliances & services are untested, dimensions are approximate and floor plans are not to scale
- Through a Homewise Home For Life Plan people aged 60+ can secure this property for up to 59% less, by purchasing a Lifetime Lease.



41619652/20240201/MO1/MH