



**OVER 60?**

Secure this property  
for up to **59% less!**

**Price**  
**£340,000**

**Freehold**

4x  1x  2x 

**Northern Parade,  
Portsmouth, Hampshire,  
PO2**

**cubitt&west**  
Helping you move forwards





## Main features

- Chain free property
- Scope to add value subject to planning permission
- Sunny aspect rear garden with pedestrian access
- Plenty of light, space and original features throughout
- Excellent travel links out of the city via the M275

## Accommodation

### GROUND FLOOR

Entrance Hallway

Lounge: 17'4 x 12'1 (5.29m x 3.69m)

Dining Room: 15'2 x 8'9 (4.63m x 2.67m)

Family Room: 11'7 x 9'3 (3.53m x 2.82m)

Kitchen: 18'9 x 12'8 (5.72m x 3.86m)

Cloakroom

### FIRST FLOOR

Landing

Bedroom 1: 17'4 x 12'3 (5.29m x 3.74m)

Bedroom 2: 14'9 x 8'7 (4.50m x 2.62m)

Bedroom 3: 11'8 x 9'5 (3.56m x 2.87m)

Bathroom

### SECOND FLOOR

Bedroom 4: 15'9 x 15'4 (4.80m x 4.68m)

### OUTSIDE

Front Forecourt

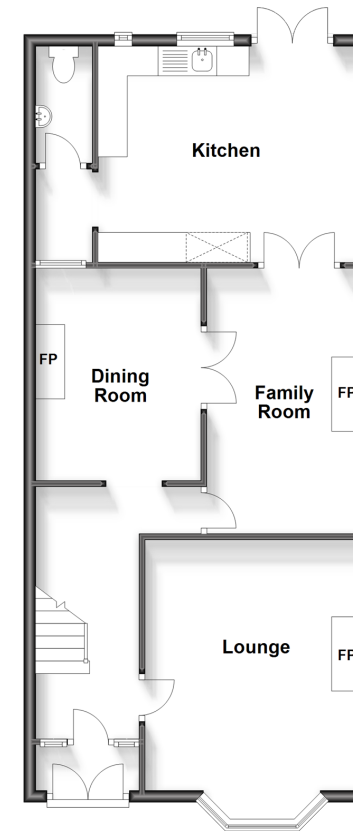
Rear Garden

**Call Portsmouth - 023 9266 1213 ■ [cubittandwest.co.uk](http://cubittandwest.co.uk)**

- Legal advice should be taken to verify fixtures/fittings, planning, alterations and/or lease details
- Appliances & services are untested, dimensions are approximate and floor plans are not to scale
- Through a Homewise Home For Life Plan people aged 60+ can secure this property for up to 59% less, by purchasing a Lifetime Lease.

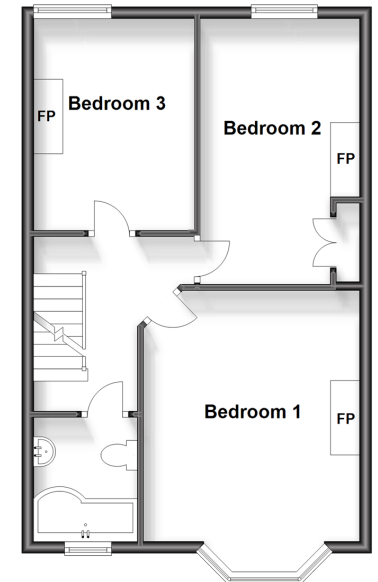
### Ground Floor

Approx. 69.9 sq. metres (752.0 sq. feet)



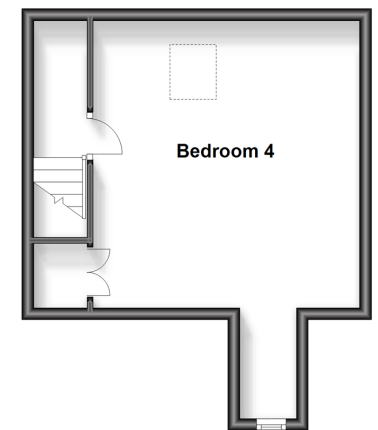
### First Floor

Approx. 49.1 sq. metres (528.8 sq. feet)



### Second Floor

Approx. 28.6 sq. metres (308.4 sq. feet)



41622371/20240405/JG/ZMG