



**Price**

**£175,000**

**Leasehold**

2x  1x  1x 

**St. Barbara Way,  
Portsmouth, Hampshire,  
PO2**

**OVER 60?**

Secure this property  
for up to **59% less!**

**cubitt&west**  
Helping you move forwards



## Main features

- Beautifully presented first floor apartment
- Modern kitchen and balcony from lounge
- Newly updated shower room
- Secure intercom access
- Garage en bloc

## Accommodation

### FIRST FLOOR

#### Entrance Hallway

Lounge/Diner: 15'7 x 12'0 (4.75m x 3.66m)

#### Balcony

Kitchen: 11'10 x 7'4 (3.61m x 2.24m)

Bedroom 1: 10'10 x 9'6 (3.30m x 2.90m)

Bedroom 2: 9'5 x 8'5 (2.87m x 2.57m)

Shower Room: 7'1 x 6'6 (2.16m x 1.98m)

### OUTSIDE

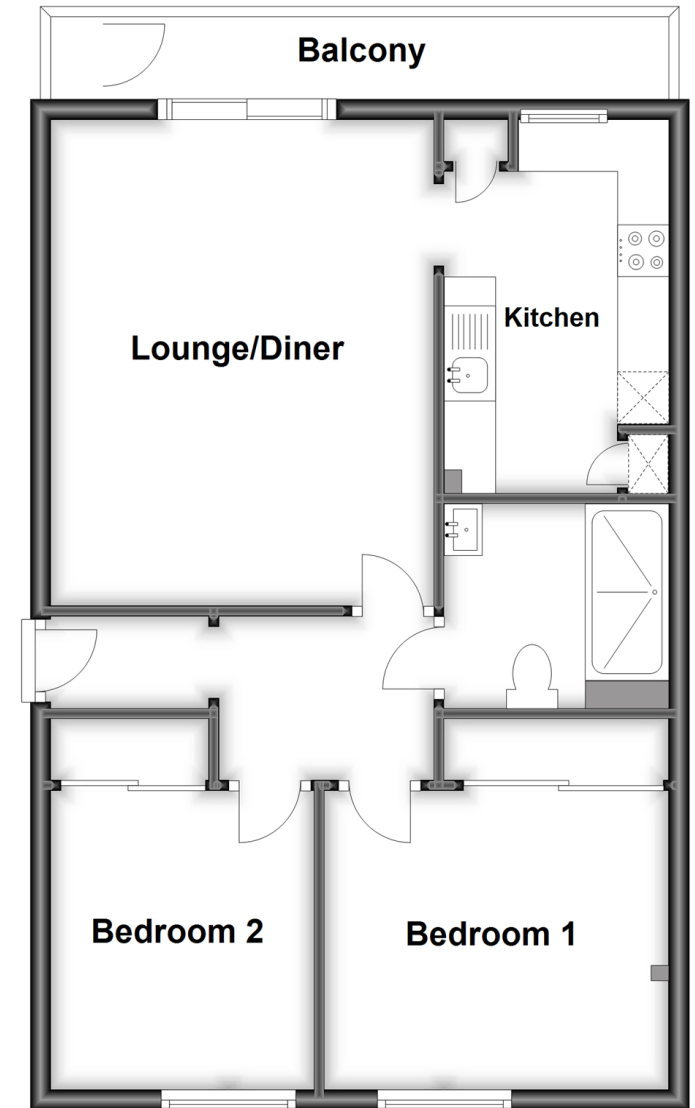
#### Rear Garden

#### Communal Gardens

#### Garage

## First Floor

Approx. 56.5 sq. metres (608.5 sq. feet)



**Call Portsmouth - 023 9266 1213 ■ [cubittandwest.co.uk](http://cubittandwest.co.uk)**

- Legal advice should be taken to verify fixtures/fittings, planning, alterations and/or lease details
- Appliances & services are untested, dimensions are approximate and floor plans are not to scale
- Through a Homewise Home For Life Plan people aged 60+ can secure this property for up to 59% less, by purchasing a Lifetime Lease.



41629319/20230429/MH/MH