



Price
£220,000

Freehold

3x  1x  1x 

**Totland Road,
Portsmouth, Hampshire,
PO6**

OVER 60?

Secure this property
for up to **59% less!**

cubitt&west
Helping you move forwards



Main features

- Chain free property
- Ample driveway with space for 2/3 vehicles
- Close proximity to Cosham High street and QA hospital
- Large rear garden with side pedestrian access
- Excellent transport and access links in and out of the city

Accommodation

GROUND FLOOR

Entrance Hallway

Lounge: 14'1 x 12'3 (4.30m x 3.74m)

Kitchen: 10'4 x 5'9 (3.15m x 1.75m)

Bathroom

FIRST FLOOR

Landing

Bedroom 1: 12'5 x 12'4 (3.79m x 3.76m)

Bedroom 2: 12'4 x 8'1 (3.76m x 2.47m)

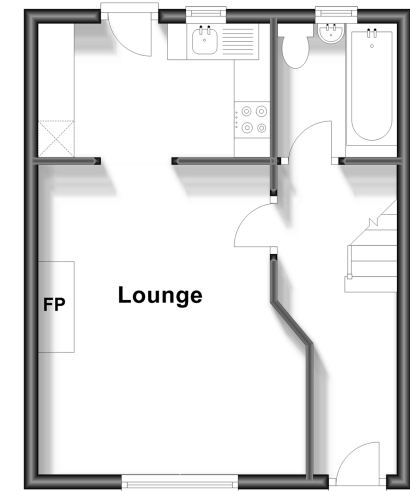
Bedroom 3: 9'7 x 6'9 (2.92m x 2.06m)

OUTSIDE

Rear Garden

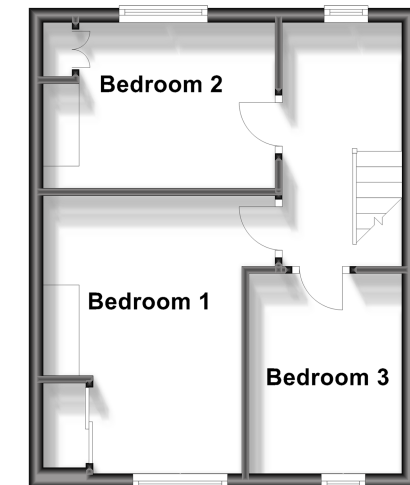
Ground Floor

Approx. 31.0 sq. metres (333.9 sq. feet)



First Floor

Approx. 31.0 sq. metres (333.9 sq. feet)



Call Portsmouth - 023 9266 1213 ■ cubittandwest.co.uk

- Legal advice should be taken to verify fixtures/fittings, planning, alterations and/or lease details
- Appliances & services are untested, dimensions are approximate and floor plans are not to scale
- Through a Homewise Home For Life Plan people aged 60+ can secure this property for up to 59% less, by purchasing a Lifetime Lease.



41629345/20240217/SA/ZMG