



Price
£290,000

Freehold

3x  1x  1x 

**Balderton Close, Hilsea,
Portsmouth, Hampshire,
PO2**

OVER 60?

Secure this property
for up to **59% less!**

cubitt&west
Helping you move forwards



Main features

- Well presented home, hidden away in a quiet cul-de-sac
- Open plan lounge/dining room
- Downstairs cloakroom and upstairs bathroom
- Modern kitchen
- Private garage en-bloc at rear

Accommodation

GROUND FLOOR

Entrance Hallway

Cloakroom

Kitchen: 9'1 x 8'3 (2.77m x 2.52m)

Lounge/Dining Room: 18'7 x 18'7 (5.67m x 5.67m)

FIRST FLOOR

Landing

Bedroom 1: 13'6 x 10'4 (4.12m x 3.15m)

Bedroom 2: 12'1 x 8'11 (3.69m x 2.72m)

Bedroom 3: 8'6 x 6'10 (2.59m x 2.08m)

Bathroom

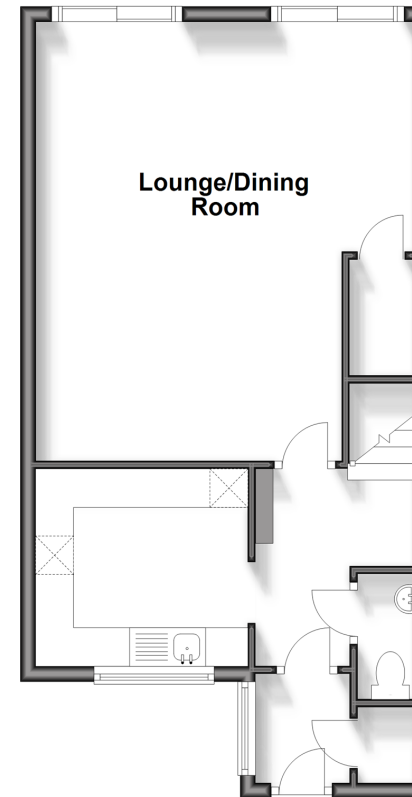
OUTSIDE

Rear Garden

Garage En-Bloc

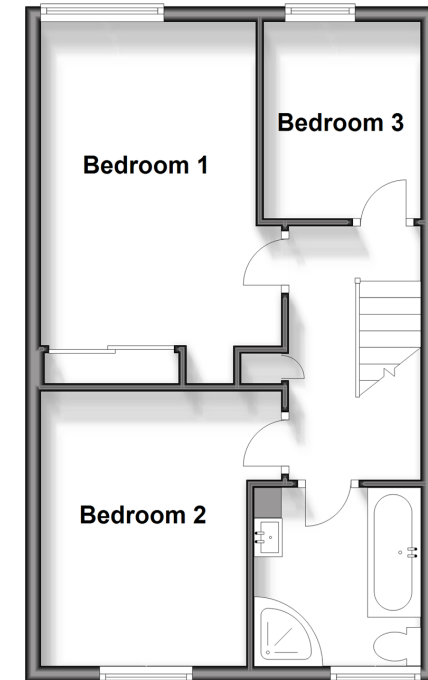
Ground Floor

Approx. 45.0 sq. metres (484.2 sq. feet)



First Floor

Approx. 41.8 sq. metres (449.8 sq. feet)



Call Portsmouth - 023 9266 1213 ■ cubittandwest.co.uk

- Legal advice should be taken to verify fixtures/fittings, planning, alterations and/or lease details
- Appliances & services are untested, dimensions are approximate and floor plans are not to scale
- Through a Homewise Home For Life Plan people aged 60+ can secure this property for up to 59% less, by purchasing a Lifetime Lease.



41630518/20240307/MO1/MH