



**OVER 60?**

Secure this property  
for up to **59% less!**

**Price**

**£330,000**

**Freehold**

3x  1x  2x 

**Stubbington Avenue,  
Portsmouth, Hampshire,  
PO2**

**cubitt&west**  
Helping you move forwards





## Main features

- Beautifully presented square bay and forecourt home
- Open plan kitchen space with separate toilet
- 2 additional living spaces
- Landscaped rear garden with pedestrian access
- Spacious double garage, suitable for a number of different uses

## Accommodation

### GROUND FLOOR

Entrance Hallway

Lounge: 16'2 x 11'11 (4.93m x 3.63m)

Sitting Room: 14'1 x 13'3 (4.30m x 4.04m)

Kitchen: 15'9 x 10'1 (4.80m x 3.08m)

Separate Toilet

Conservatory Area: 8'4 x 8'1 (2.54m x 2.47m)

### FIRST FLOOR

Landing

Bedroom 1: 15'9 x 12'2 (4.80m x 3.71m)

Bedroom 2: 13'9 x 11'2 (4.19m x 3.41m)

Bedroom 3: 10'3 x 6'9 (3.13m x 2.06m)

Bathroom

### OUTSIDE

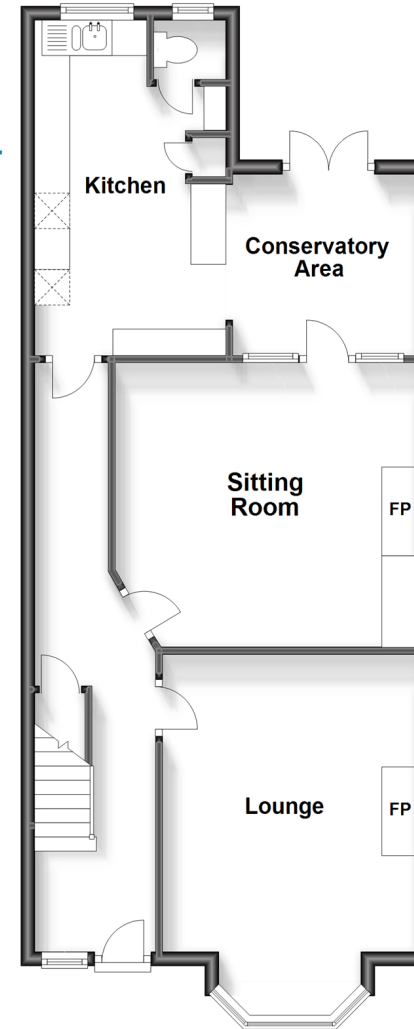
Front Forecourt

Rear Garden

Garage

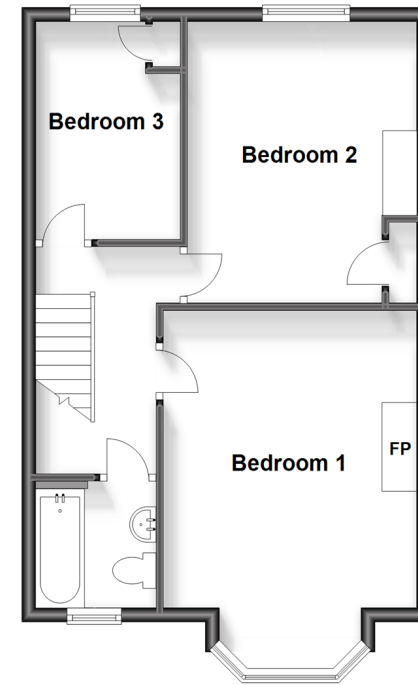
### Ground Floor

Approx. 66.8 sq. metres (719.5 sq. feet)



### First Floor

Approx. 46.2 sq. metres (497.3 sq. feet)



**Call Portsmouth - 023 9266 1213 ■ [cubittandwest.co.uk](http://cubittandwest.co.uk)**

- Legal advice should be taken to verify fixtures/fittings, planning, alterations and/or lease details
- Appliances & services are untested, dimensions are approximate and floor plans are not to scale
- Through a Homewise Home For Life Plan people aged 60+ can secure this property for up to 59% less, by purchasing a Lifetime Lease.



41632280/20230921/MO1/MH