



OVER 60?

Secure this property
for up to **59% less!**



Video Tour available

Price

£335,000

Freehold

3x 1x 2x

**Chichester Road, North
End, Portsmouth,
Hampshire, PO2**

cubitt&west
Helping you move forwards



Main features

- Spacious home with off-road parking at the rear
- Large open-plan kitchen/dining space with two further reception rooms
- Great potential to further improve or develop

Accommodation

GROUND FLOOR

Entrance Hallway

Lounge: 14'0 x 11'1 (4.27m x 3.38m)

Dining Room: 13'8 x 9'10 (4.17m x 3.00m)

Breakfast Area: 12'10 x 7'2 (3.91m x 2.19m)

Kitchen: 17'8 x 9'1 (5.39m x 2.77m)

FIRST FLOOR

Landing

Bedroom 1: 13'11 x 11'3 (4.24m x 3.43m)

Bedroom 2: 15'1 x 11'3 (4.60m x 3.43m)

Bedroom 3: 11'11 x 8'8 (3.63m x 2.64m)

Bathroom

OUTSIDE

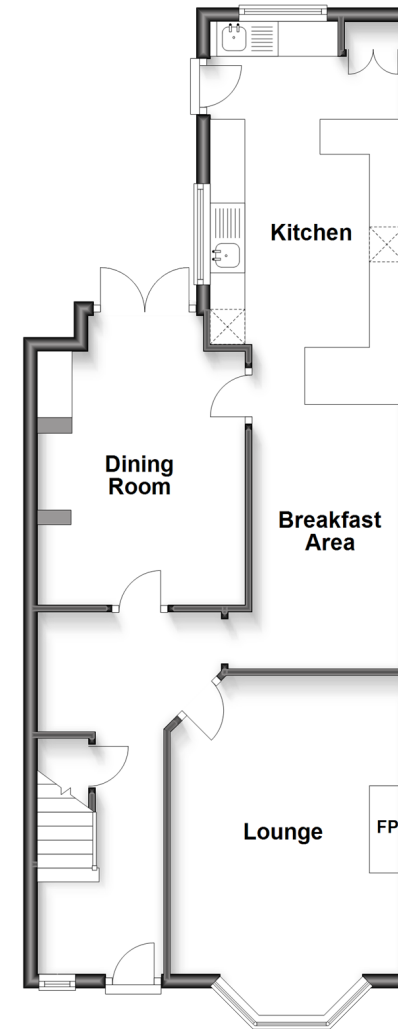
Front Forecourt

Rear Garden

Off-Road Parking

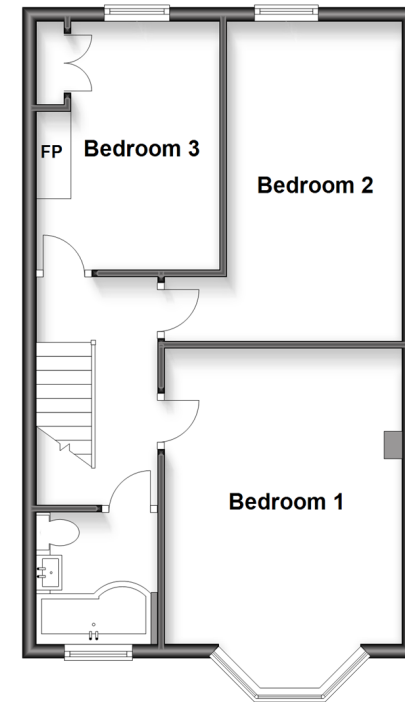
Ground Floor

Approx. 61.5 sq. metres (662.0 sq. feet)



First Floor

Approx. 47.6 sq. metres (512.1 sq. feet)



Call Portsmouth - 023 9266 1213 ■ cubittandwest.co.uk

- Legal advice should be taken to verify fixtures/fittings, planning, alterations and/or lease details
- Appliances & services are untested, dimensions are approximate and floor plans are not to scale
- Through a Homewise Home For Life Plan people aged 60+ can secure this property for up to 59% less, by purchasing a Lifetime Lease.



41632598/20230320/ZMG/MH