



Price
£165,000
Leasehold

3x  1x  1x 

**Angmering House,
Upper Arundel Street,
Portsmouth, Hampshire,
PO1**

OVER 60?

Secure this property
for up to **59% less!**

cubitt&west
Helping you move forwards



Main features

- Large purpose built maisonette with accessible ground floor entrance
- Off road parking space with the property
- Private low maintenance rear garden
- Bright open plan lounge/diner
- Excellent transport links and access in and out of the city

Accommodation

GROUND FLOOR

Entrance Hallway

Large/Diner: 17'7 x 13'1 (5.36m x 3.99m)

Kitchen: 13'7 x 8'8 (4.14m x 2.64m)

FIRST FLOOR

Landing

Bedroom 1: 11'3 x 9'3 (3.43m x 2.82m)

Bedroom 2: 14'1 x 9'6 (4.30m x 2.90m)

Bedroom 3: 10'3 x 7'9 (3.13m x 2.36m)

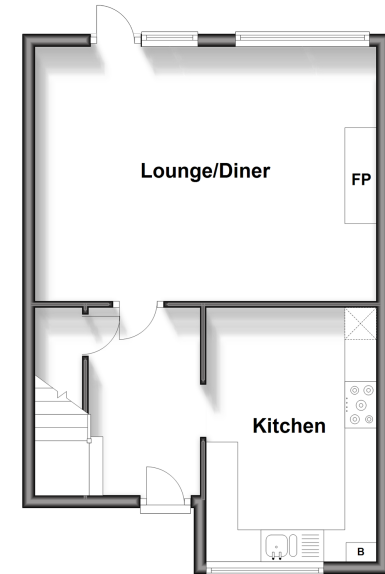
Bathroom

OUTSIDE

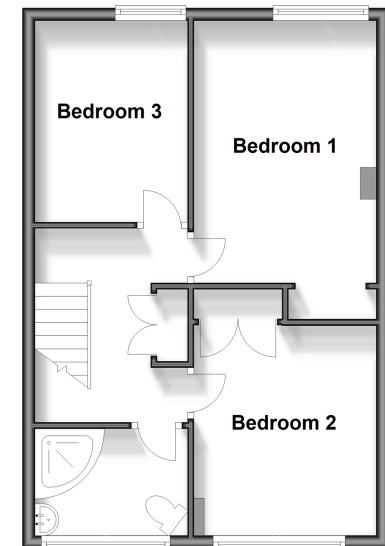
Off Road Parking

Rear Garden

Ground Floor
Approx. 41.0 sq. metres (441.5 sq. feet)



First Floor
Approx. 43.8 sq. metres (472.0 sq. feet)



Call Portsmouth - 023 9266 1213 ■ cubittandwest.co.uk

- Legal advice should be taken to verify fixtures/fittings, planning, alterations and/or lease details
- Appliances & services are untested, dimensions are approximate and floor plans are not to scale
- Through a Homewise Home For Life Plan people aged 60+ can secure this property for up to 59% less, by purchasing a Lifetime Lease.



41633574/20240307/JG/ZMG