



Price
£160,000

2x  1x  1x 

**Bradbury House,
Kingston Road,
Portsmouth, Hampshire,
PO1**

OVER 60?

You could get up to
59% off the price!*



Video Tour available

cubitt&west
Helping you move forwards



Main features

- Open to investors and First time buyer's alike
- Spacious apartment with storage space in loft
- Allocated parking to the rear
- Lift access to all floors
- Central location, easy access in and out of city

Accommodation

SECOND FLOOR

Entrance Hallway

Lounge/Diner: 13'2 x 11'1 (4.02m x 3.38m)

Kitchen: 8'6 x 7'7 (2.59m x 2.31m)

Bedroom 1: 13'7 x 9'5 (4.14m x 2.87m)

Bedroom 2: 9'5 x 8'10 (2.87m x 2.69m)

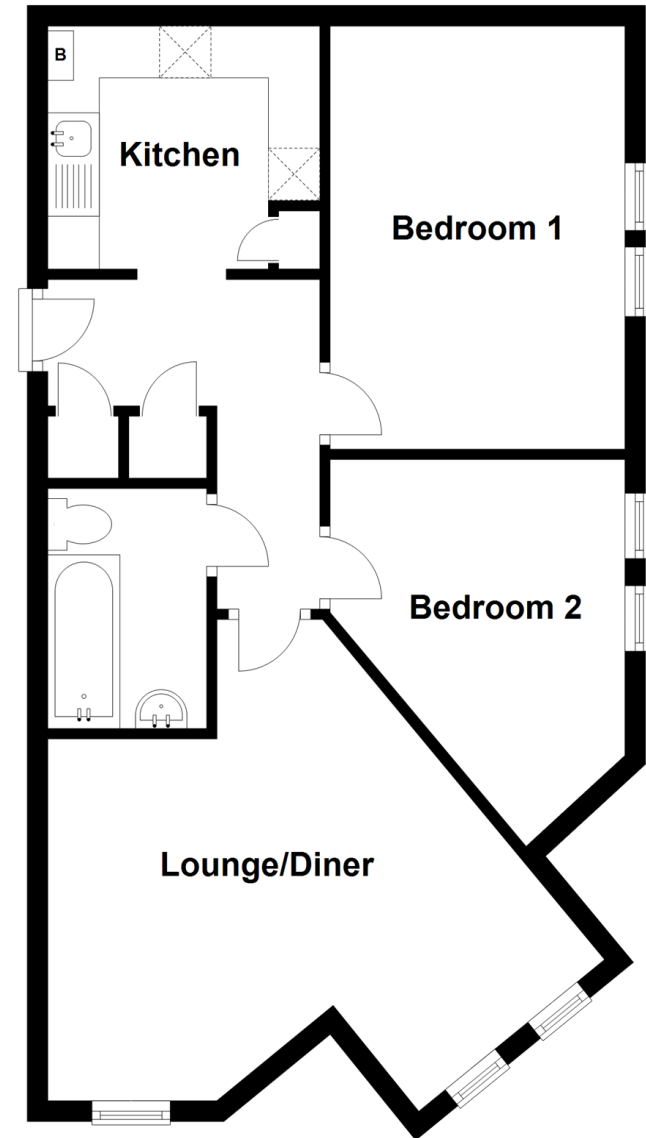
Bathroom: 7'6 x 5'11 (2.29m x 1.80m)

OUTSIDE

Allocated Parking

Second Floor

Approx. 54.9 sq. metres (590.8 sq. feet)



Call Portsmouth - 023 9266 1213 ■ cubittandwest.co.uk

- Legal advice should be taken to verify fixtures/fittings, planning, alterations and/or lease details
- Appliances & services are untested, dimensions are approximate and floor plans are not to scale
- Our Homewise partnership offer a 'Home for Life' plan to buyers over 60, granting a lifetime lease for your protection and reducing the purchase price by up to 59%



41633630/20220830/ZMG/MH