



OVER 60?

Secure this property
for up to **59% less!**

Price

£228,000

Freehold

3x  1x  2x 

**Emsworth Road, North
End, Portsmouth,
Hampshire, PO2**

cubitt&west
Helping you move forwards



Main features

- Spacious three bedroom home with bay and forecourt
- Upstairs shower room
- Open-plan living accommodation
- Central location, close to shops and travel links
- Tenants currently in situ

Accommodation

GROUND FLOOR

Entrance Hallway

Lounge: 11'0 x 10'2 (3.36m x 3.10m)

Dining Area: 13'0 x 11'0 (3.97m x 3.36m)

Separate Toilet

Kitchen: 10'2 x 7'10 (3.10m x 2.39m)

Sun Room: 8'11 x 7'5 (2.72m x 2.26m)

FIRST FLOOR

Landing

Bedroom 1: 13'0 x 11'0 (3.97m x 3.36m)

Bedroom 2: 11'0 x 10'2 (3.36m x 3.10m)

Bedroom 3: 7'5 x 5'11 (2.26m x 1.80m)

Shower Room

OUTSIDE

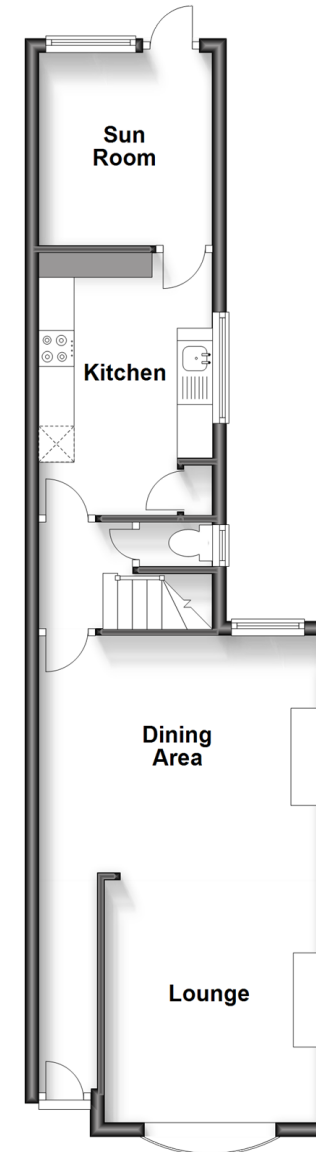
Front Forecourt

Rear Garden

Shed

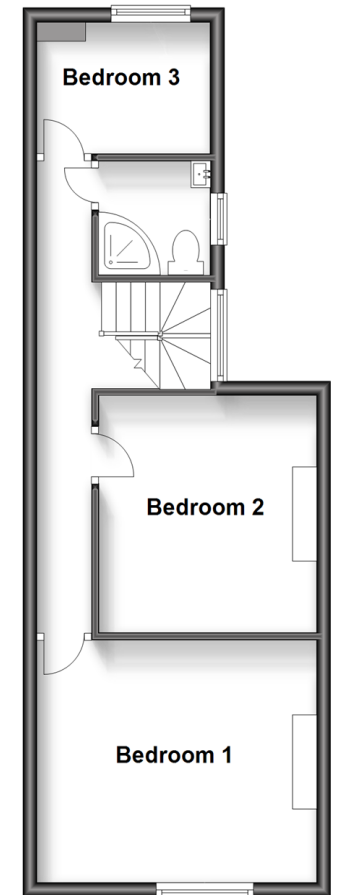
Ground Floor

Approx. 46.6 sq. metres (501.6 sq. feet)



First Floor

Approx. 39.6 sq. metres (426.6 sq. feet)



Call Portsmouth - 023 9266 1213 ■ cubittandwest.co.uk

- Legal advice should be taken to verify fixtures/fittings, planning, alterations and/or lease details
- Appliances & services are untested, dimensions are approximate and floor plans are not to scale
- Through a Homewise Home For Life Plan people aged 60+ can secure this property for up to 59% less, by purchasing a Lifetime Lease.



41633640/20230717/ZMG/MH