



OVER 60?

Secure this property
for up to **59% less!**



Video Tour available

Price

£250,000

Freehold

2x  1x  1x 

**Blakesley Lane,
Portsmouth, Hampshire,
PO3**

cubitt & west
Helping you move forwards



Main features

- Open plan property being offered with no forward chain
- Garage in a separate block
- Additional conservatory
- Newly fitted wet room on the first floor
- Safe and quiet cul-de-sac, highly sought after location

Accommodation

GROUND FLOOR

Entrance

Lounge/Kitchen Area: 25'0 x 11'9
(7.63m x 3.58m)

Conservatory: 8'2 x 7'10 (2.49m x 2.39m)

FIRST FLOOR

Landing

Bedroom 1: 8'10 x 8'10 (2.69m x 2.69m)

Bedroom 2: 9'0 x 8'10 (2.75m x 2.69m)

Wet Room

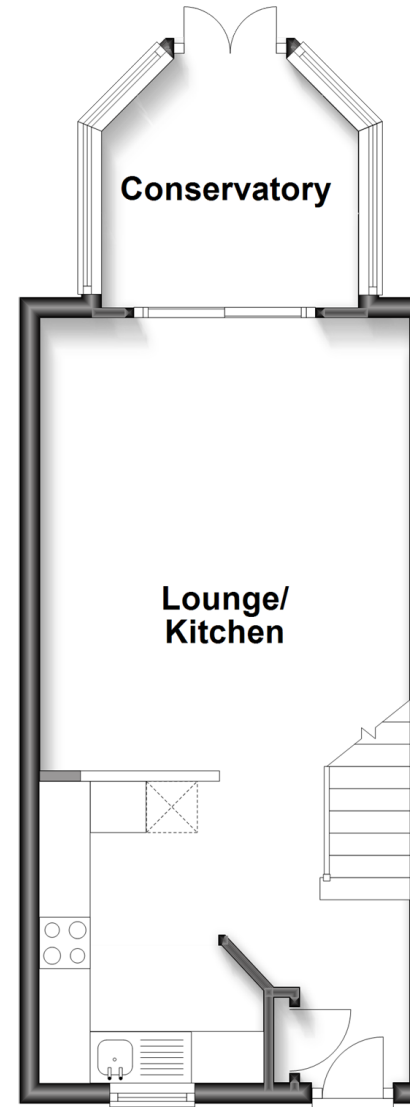
OUTSIDE

Rear Garden

Garage

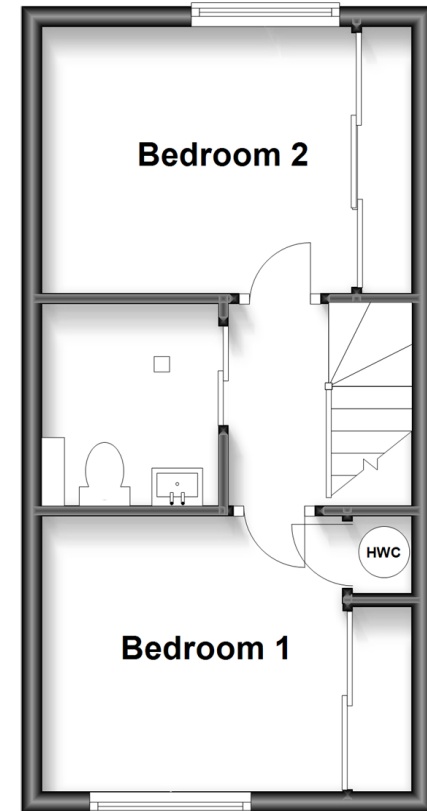
Ground Floor

Approx. 33.1 sq. metres (356.7 sq. feet)



First Floor

Approx. 27.2 sq. metres (293.2 sq. feet)



Call Portsmouth - 023 9266 1213 ■ cubittandwest.co.uk

- Legal advice should be taken to verify fixtures/fittings, planning, alterations and/or lease details
- Appliances & services are untested, dimensions are approximate and floor plans are not to scale
- Through a Homewise Home For Life Plan people aged 60+ can secure this property for up to 59% less, by purchasing a Lifetime Lease.



41633658/20221114/MH/MH