



OVER 60?

You could get up to
59% off the price!*



Video Tour available

Price

£150,000

Leasehold

1x  1x  1x 

**The Mews, Clive Road,
Fratton, Portsmouth,
Hampshire, PO1**

cubitt&west
Helping you move forwards



Main features

- Newly refurbished throughout property
- Great central location
- Allocated parking space
- Excellent transport links in and out of city
- Chain free property

Accommodation

GROUND FLOOR

Entrance Hallway

Lounge/Kitchen: 17'9 x 13'0
(5.41m x 3.97m)

Bedroom: 11'9 x 7'1 (3.58m x 2.16m)

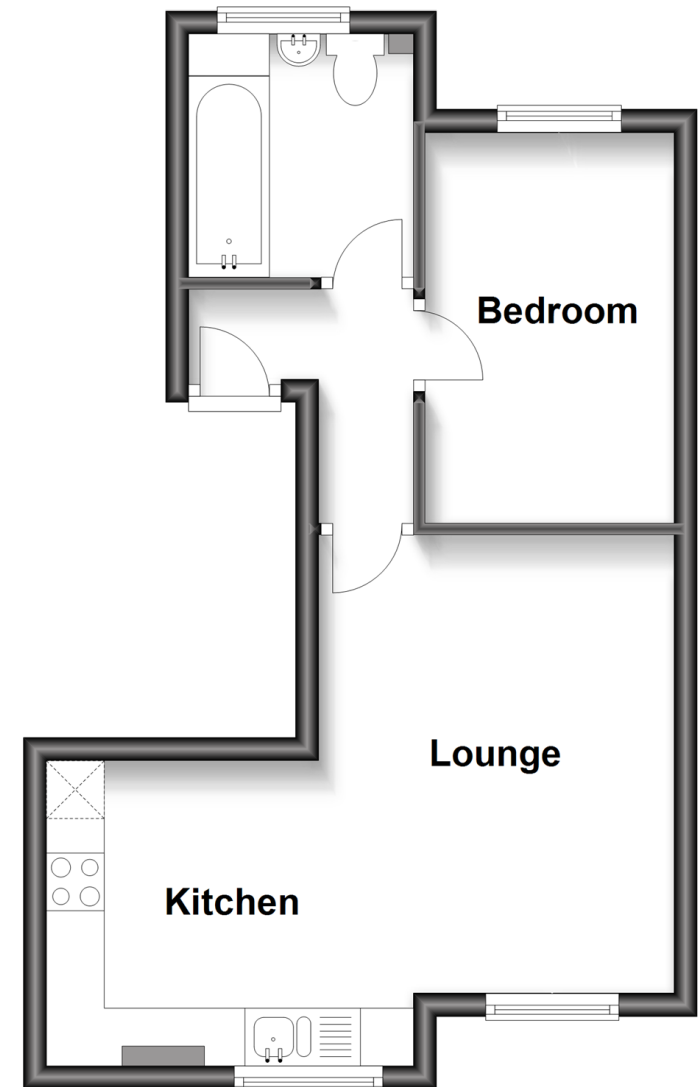
Bathroom: 7'3 x 6'2 (2.21m x 1.88m)

OUTSIDE

Allocated Parking

Ground Floor

Approx. 33.8 sq. metres (363.4 sq. feet)



Call Portsmouth - 023 9266 1213 ■ cubittandwest.co.uk

- Legal advice should be taken to verify fixtures/fittings, planning, alterations and/or lease details
- Appliances & services are untested, dimensions are approximate and floor plans are not to scale
- Our Homewise partnership offer a 'Home for Life' plan to buyers over 60, granting a lifetime lease for your protection and reducing the purchase price by up to 59%



41633699/20220714/ZMG/ZMG