



Price
£145,000

2x  1x  1x 

**Cliffdale Gardens,
Cosham, Portsmouth,
Hampshire, PO6**



Video Tour available

cubitt&west
Helping you move forwards



Main features

- Detached park home with allocated parking
- Sought after location within an exclusive site
- Wrap around garden with storage
- Close to shops, Queen Alexandra Hospital and links out of city
- Ideal for any buyer looking for community living

Accommodation

GROUND FLOOR

Entrance Hallway

Kitchen: 9'6 x 7'7 (2.90m x 2.31m)

Lounge: 9'3 x 7'9 (2.82m x 2.36m)

Dining Room: 12'2 x 7'7 (3.71m x 2.31m)

Study: 10'4 x 3'8 (3.15m x 1.12m)

Bedroom 1: 14'3 x 10'8 (4.35m x 3.25m)

Bedroom 2: 13'2 x 5'3 (4.02m x 1.60m)

Bathroom: 6'4 x 4'3 (1.93m x 1.30m)

OUTSIDE

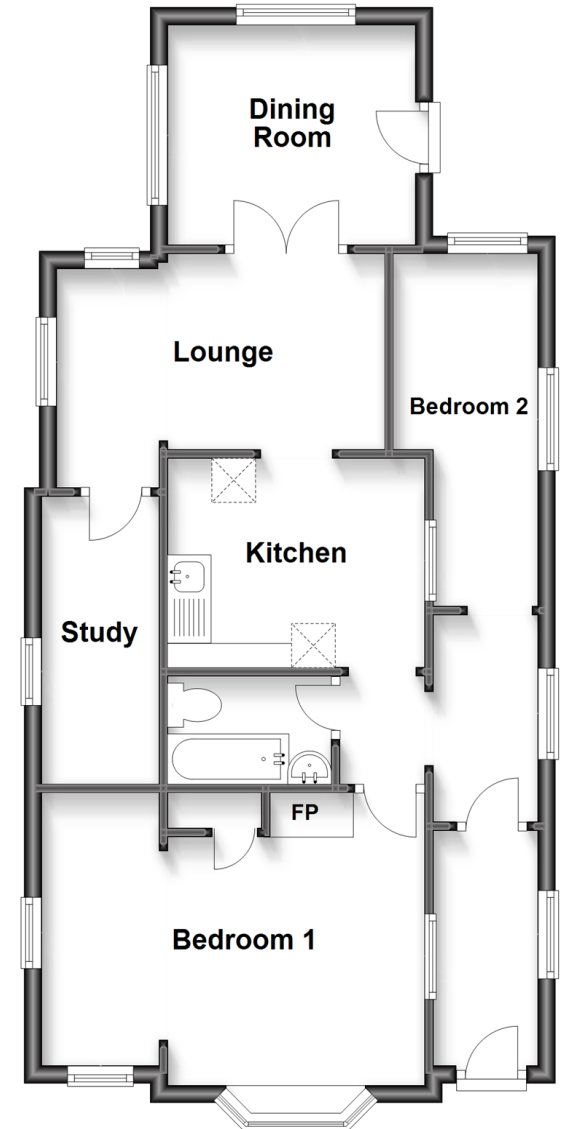
Wrap around garden

Storage

Allocated Parking

Ground Floor

Approx. 59.9 sq. metres (644.4 sq. feet)



Call Portsmouth - 023 9266 1213 ■ cubittandwest.co.uk

- If buying to let, the energy rating will need to be improved to at least 'E' rating before you can let the property
- Legal advice should be taken to verify fixtures/fittings, planning, alterations and/or lease details
- Appliances & services are untested, dimensions are approximate and floor plans are not to scale



41633717/20220812/ZMG/MH