



Price
£130,000

Leasehold

2x  1x  1x 

**Newcomen Court,
Newcomen Road,
Stamshaw, Portsmouth,
PO2**

OVER 60?

Secure this property
for up to **59% less!**



Video Tour available

cubitt&west
Helping you move forwards



Main features

- Second floor flat situated in a quiet residential location
- Located in great school catchment area
- Good transport links in and out of the city
- Chain-free property
- Viewing highly recommended

Accommodation

SECOND FLOOR

Entrance Hallway

Kitchen: 7'9 x 7'6 (2.36m x 2.29m)

Bathroom: 8'3 x 4'7 (2.52m x 1.40m)

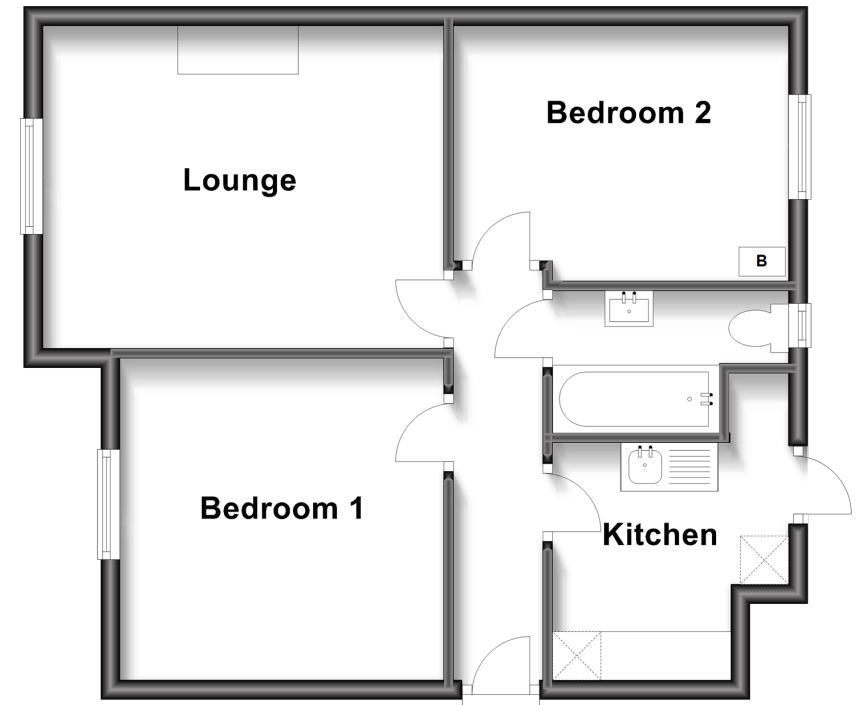
Bedroom 1: 10'9 x 10'3 (3.28m x 3.13m)

Lounge: 13'5 x 10'8 (4.09m x 3.25m)

Bedroom 2: 11'3 x 8'4 (3.43m x 2.54m)

Second Floor

Approx. 48.9 sq. metres (526.4 sq. feet)



Call Portsmouth - 023 9266 1213 ■ cubittandwest.co.uk

- Legal advice should be taken to verify fixtures/fittings, planning, alterations and/or lease details
- Appliances & services are untested, dimensions are approximate and floor plans are not to scale
- Through a Homewise Home For Life Plan people aged 60+ can secure this property for up to 59% less, by purchasing a Lifetime Lease.



41633798/20230118/JT/ZMG