



Price
£270,000

Freehold

3x  1x  2x 

**Westbourne Road,
Copnor, Hampshire, PO2**

OVER 60?

Secure this property
for up to **59% less!**

cubitt&west
Helping you move forwards



Main features

- Generous family home situated in a popular location
- Recently renovated to a high standard throughout
- Sunny aspect low maintenance garden
- Great school and college catchment area

Accommodation

GROUND FLOOR

Entrance Hallway

Lounge: 14'9 x 8'9 (4.50m x 2.67m)

Dining Room: 10'5 x 6'5 (3.18m x 1.96m)

Kitchen: 13'7 x 8'7 (4.14m x 2.62m)

Lean To: 9'3 x 5'9 (2.82m x 1.75m)

FIRST FLOOR

Landing

Bedroom 1: 13'5 x 12'2 (4.09m x 3.71m)

Bedroom 2: 12'7 x 8'6 (3.84m x 2.59m)

Bedroom 3: 6'2 x 5'6 (1.88m x 1.68m)

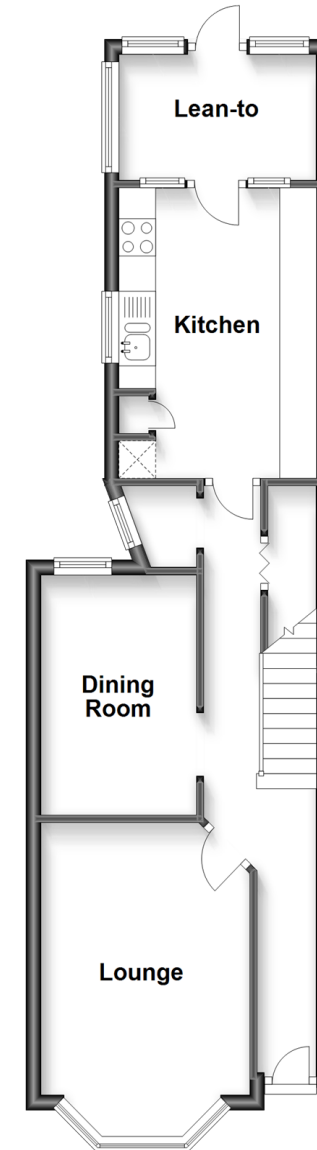
Bathroom: 6'2 x 5'6 (1.88m x 1.68m)

OUTSIDE

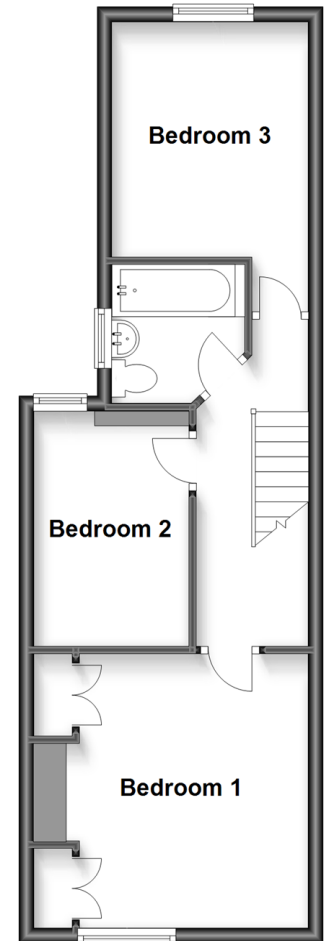
Front Forecourt

Rear Garden

Ground Floor
Approx. 44.6 sq. metres (479.9 sq. feet)



First Floor
Approx. 40.0 sq. metres (430.7 sq. feet)



Call Portsmouth - 023 9266 1213 ■ cubittandwest.co.uk

- Legal advice should be taken to verify fixtures/fittings, planning, alterations and/or lease details
- Appliances & services are untested, dimensions are approximate and floor plans are not to scale
- Through a Homewise Home For Life Plan people aged 60+ can secure this property for up to 59% less, by purchasing a Lifetime Lease.



41633894/20230530/MS/ZMG