



**Price**  
**£156,000**

**Leasehold**

2x  1x  1x 

**Quarterdeck, Vectis  
Way, Cosham,  
Portsmouth, Hampshire,  
PO6**

**OVER 60?**

Secure this property  
for up to **59% less!**

**cubitt&west**  
Helping you move forwards





## Main features

- Allocated parking space
- Offered chain-free
- Walking distance to Queen Alexandra Hospital
- Excellent transport links in and out of the city
- Perfect opportunity for first time buyers and investors alike

## Accommodation

First Floor

Entrance Hallway

Lounge/Diner: 19'7 x 13'1 (5.97m x 3.99m)

Bedroom 1: 14'1 x 13'5 (4.30m x 4.09m)

Kitchen: 9'2 x 7'4 (2.80m x 2.24m)

Bedroom 2: 12'7 x 10'0 (3.84m x 3.05m)

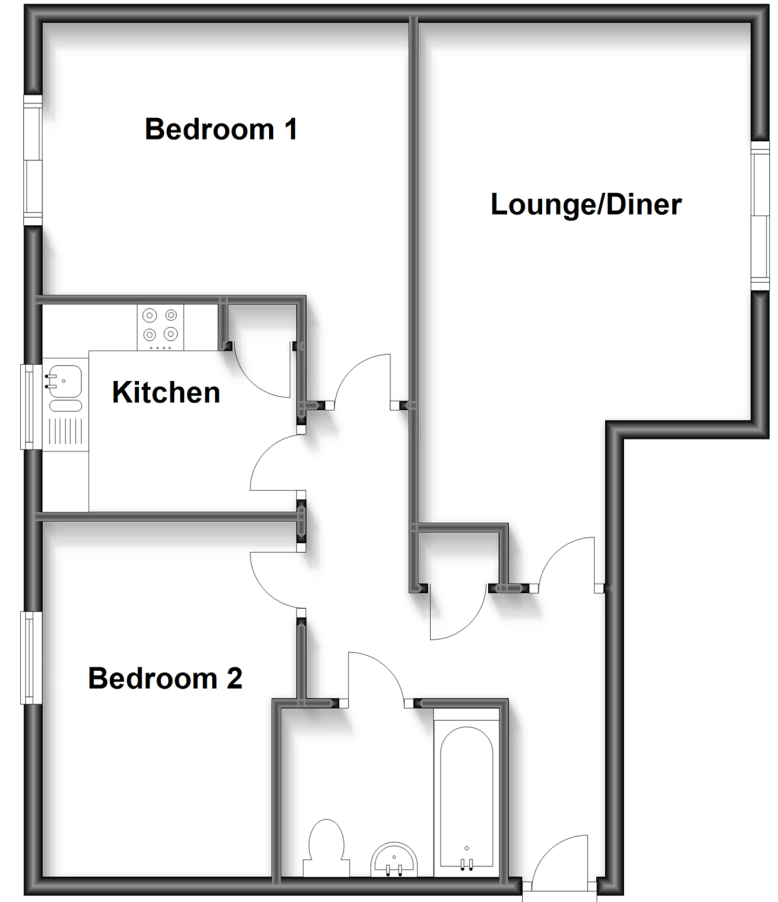
Bathroom: 7'6 x 5'8 (2.29m x 1.73m)

## OUTSIDE

Allocated Parking

## First Floor

Approx. 62.1 sq. metres (668.0 sq. feet)



**Call Portsmouth - 023 9266 1213 ■ [cubittandwest.co.uk](http://cubittandwest.co.uk)**

- Legal advice should be taken to verify fixtures/fittings, planning, alterations and/or lease details
- Appliances & services are untested, dimensions are approximate and floor plans are not to scale
- Through a Homewise Home For Life Plan people aged 60+ can secure this property for up to 59% less, by purchasing a Lifetime Lease.



41633906/20230301/ZMG/ZMG