



OVER 60?

Secure this property
for up to **59% less!**

Price

£300,000

Freehold

3x  1x  2x 

**Lovett Road,
Portsmouth, Hampshire,
PO3**

cubitt&west
Helping you move forwards



Main features

- Well presented family home in a requested area
- Open plan living spaces
- Separate extension to the rear
- Private rear garden
- Access to good schools and local daily amenities are close by

Accommodation

GROUND FLOOR

Entrance Hallway

Lounge: 13'10 x 12'4 (4.22m x 3.76m)

Dining Room: 11'1 x 10'10 (3.38m x 3.30m)

Kitchen: 11'6 x 6'9 (3.51m x 2.06m)

Conservatory: 16'3 x 10'1 (4.96m x 3.08m)

FIRST FLOOR

Landing

Bedroom 1: 14'1 x 9'9 (4.30m x 2.97m)

Bedroom 2: 11'2 x 9'4 (3.41m x 2.85m)

Bedroom 3: 7'1 x 7'1 (2.16m x 2.16m)

Bathroom

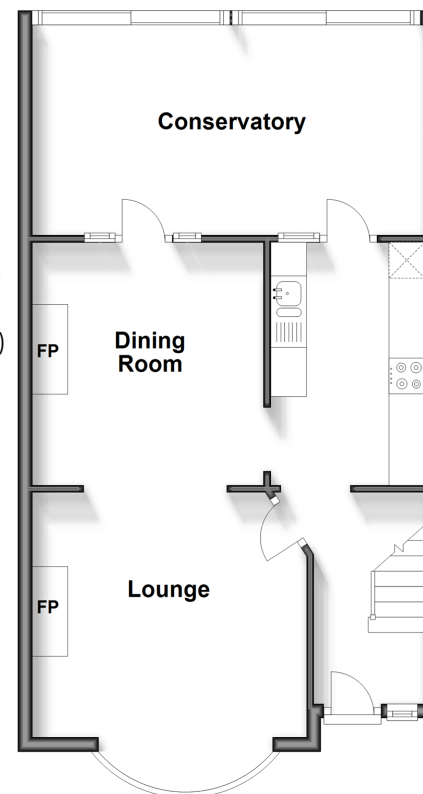
OUTSIDE

Front Forecourt

Rear Garden

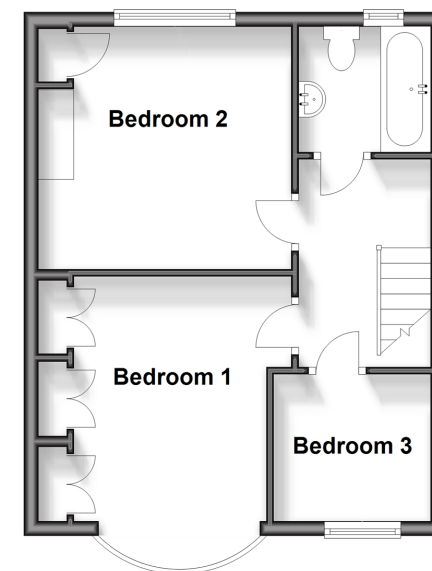
Ground Floor

Approx. 54.3 sq. metres (584.5 sq. feet)



First Floor

Approx. 38.3 sq. metres (412.7 sq. feet)



Call Portsmouth - 023 9266 1213 ■ cubittandwest.co.uk

- If buying to let, the energy rating will need to be improved to at least 'E' rating before you can let the property
- Legal advice should be taken to verify fixtures/fittings, planning, alterations and/or lease details
- Appliances & services are untested, dimensions are approximate and floor plans are not to scale
- Through a Homewise Home For Life Plan people aged 60+ can secure this property for up to 59% less, by purchasing a Lifetime Lease.



41633907/20240424/MO1/MH