



Price
£142,500

Leasehold

1x  1x  1x 

**Milton Road,
Portsmouth, Hampshire,
PO3**

OVER 60?

Secure this property
for up to **59% less!**

cubitt&west
Helping you move forwards



Main features

- First floor converted apartment
- Central location, close to parks, shops and access to motorway
- Separate kitchen to lounge
- Ready to move straight into
- Ideal investment purchase, or first time buy

Accommodation

FIRST FLOOR

Entrance Hallway

Lounge: 15'7 x 13'2 (4.75m x 4.02m)

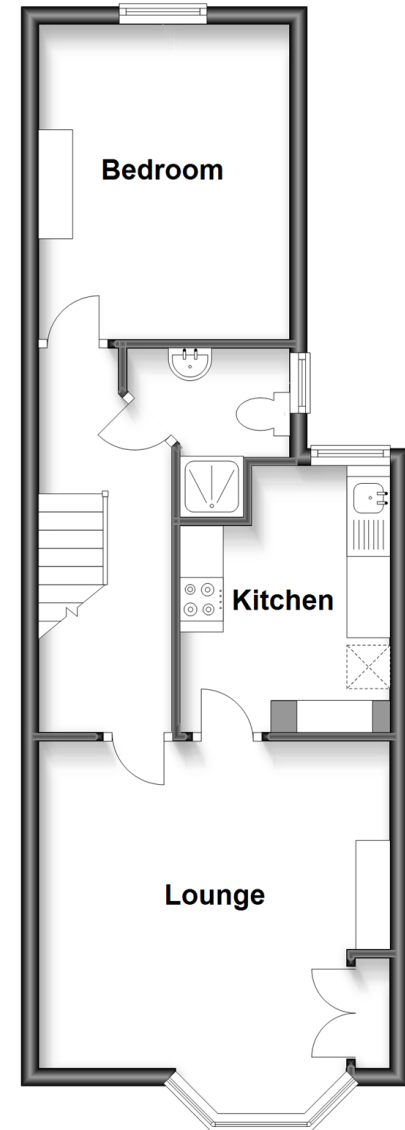
Kitchen: 10'4 x 7'7 (3.15m x 2.31m)

Shower Room: 6'8 x 6'6 (2.03m x 1.98m)

Bedroom: 11'5 x 9'5 (3.48m x 2.87m)

First Floor

Approx. 43.2 sq. metres (464.5 sq. feet)



Call Portsmouth - 023 9266 1213 ■ cubittandwest.co.uk

- Legal advice should be taken to verify fixtures/fittings, planning, alterations and/or lease details
- Appliances & services are untested, dimensions are approximate and floor plans are not to scale
- Through a Homewise Home For Life Plan people aged 60+ can secure this property for up to 59% less, by purchasing a Lifetime Lease.



41633933/20230307/JT/MH