



Price

£80,000

Leasehold

2x  1x  1x 

**Harbour Side Park,
Hampshire, Ongar,
Hampshire, PO3 6QP**



Video Tour available

cubitt&west
Helping you move forwards



Main features

- Offered with no forward chain
- Bright, open plan modern living area
- Ample off-road parking
- Excellent for residents or a holiday home
- Excellent transport links in & out of city

Accommodation

GROUND FLOOR

Entrance

Lounge/Kitchen: 21'5 x 13'5 (6.53m x 4.09m)

Bedroom 1: 9'6 x 9'6 (2.90m x 2.90m)

En-Suite Shower

Bedroom 2: 9'9 x 9'5 (2.97m x 2.87m)

Bathroom: 5'9 x 4'9 (1.75m x 1.45m)

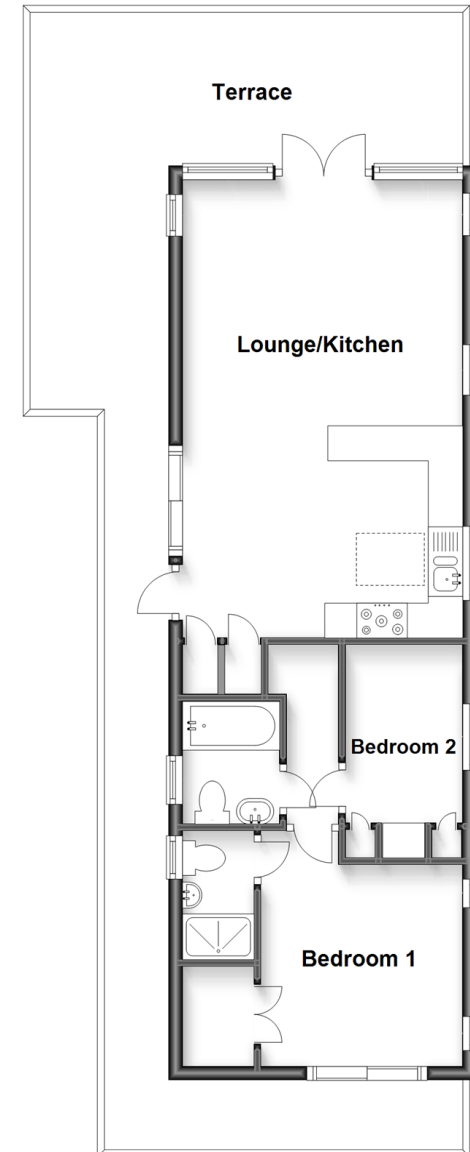
OUTSIDE

Balcony/Terrace

Driveway/Parking

Ground Floor

Approx. 51.6 sq. metres (555.0 sq. feet)



Call Portsmouth - 023 9266 1213 ■ cubittandwest.co.uk

- If buying to let, the energy rating will need to be improved to at least 'E' rating before you can let the property
- Legal advice should be taken to verify fixtures/fittings, planning, alterations and/or lease details
- Appliances & services are untested, dimensions are approximate and floor plans are not to scale



41633937/20230502/ZMG/ZMG