



Price
£275,000

Freehold

3x  1x  3x 

**Sandringham Road,
Portsmouth, Hampshire,
PO1**

OVER 60?

Secure this property
for up to **59% less!**

cubitt&west
Helping you move forwards



Main features

- Spacious family home, close to shops and schools
- Flexible living accommodation throughout
- Open-plan lounge/diner
- Large kitchen
- Offered with no forward chain

Accommodation

GROUND FLOOR

Entrance Hallway

Ancillary Room: 14'4 x 9'2 (4.37m x 2.80m)

Lounge: 12'9 x 11'3 (3.89m x 3.43m)

Dining Room: 13'0 x 9'6 (3.97m x 2.90m)

Kitchen: 12'10 x 9'2 (3.91m x 2.80m)

Separate Toilet

FIRST FLOOR

Landing

Bathroom

Bedroom 1: 12'9 x 11'4 (3.89m x 3.46m)

Bedroom 2: 14'4 x 9'0 (4.37m x 2.75m)

Bedroom 3: 12'11 x 9'5 (3.94m x 2.87m)

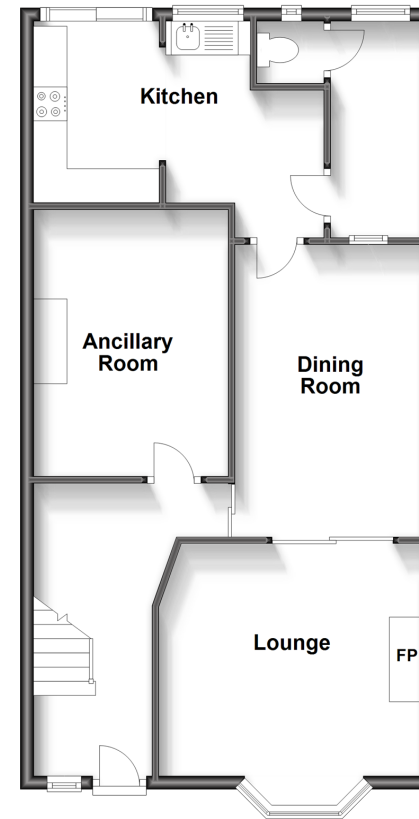
OUTSIDE

Front forecourt

Rear Garden

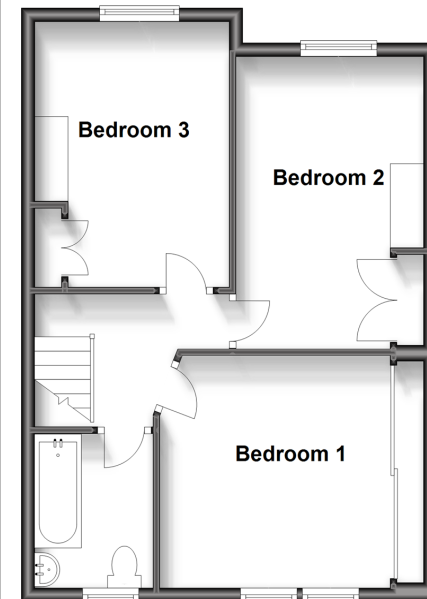
Ground Floor

Approx. 65.0 sq. metres (700.1 sq. feet)



First Floor

Approx. 47.2 sq. metres (507.7 sq. feet)



Call Portsmouth - 023 9266 1213 ■ cubittandwest.co.uk

- Legal advice should be taken to verify fixtures/fittings, planning, alterations and/or lease details
- Appliances & services are untested, dimensions are approximate and floor plans are not to scale
- Through a Homewise Home For Life Plan people aged 60+ can secure this property for up to 59% less, by purchasing a Lifetime Lease.



41633996/20230620/JT/MH