



Price
£735,000

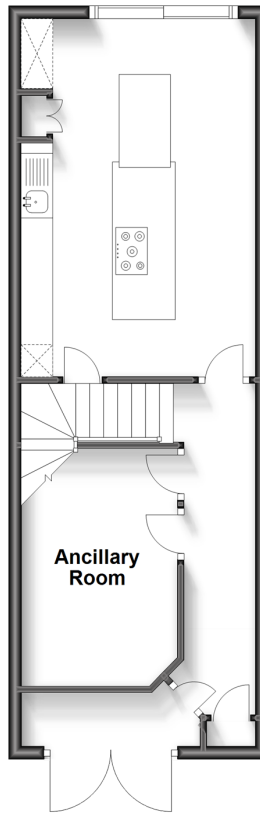
Freehold

3x  1x  2x 

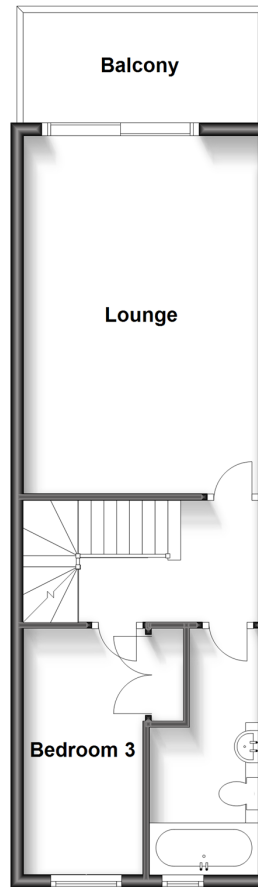
**Bryher Island, Port
Solent, Portsmouth,
Hampshire, PO6**

cubitt&west
Helping you move forwards

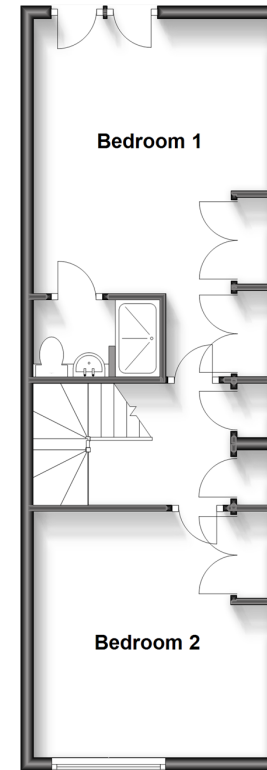
Ground Floor
Approx. 41.7 sq. metres (449.0 sq. feet)



First Floor
Approx. 42.4 sq. metres (455.9 sq. feet)



Second Floor
Approx. 42.4 sq. metres (455.9 sq. feet)



Accommodation

GROUND FLOOR

Entrance Hallway

Ancillary Room: 12'4 x 8'2 (3.76m x 2.49m)

Kitchen: 18'5 x 12'1 (5.62m x 3.69m)

FIRST FLOOR

Landing

Lounge: 18'5 x 12'1 (5.62m x 3.69m)

Balcony

Bedroom 3: 12'4 x 6'4 (3.76m x 1.93m)

Family Bathroom: 12'4 x 5'9 (3.76m x 1.75m)

SECOND FLOOR

Landing

Bedroom 1: 18'5 x 12'1 (5.62m x 3.69m)

En-Suite Shower Room

Bedroom 2: 12'4 x 12'1 (3.76m x 3.69m)

OUTSIDE

Driveway

Rear Garden

Mooring



Main features

- **Stunning marina home with private 11 metre mooring**
- **Substantially extended ground floor**
- **Attractive marina views overlooking Port Solent**
- **Modern fixtures throughout**
- **Offered with no forward chain**



Nearest Schools

Primary Schools: St Paul's Catholic Primary 0.4 miles, Paulsgrove Primary 0.5 miles, Westfield Junior School 0.9 miles

Secondary Schools: King Richard Secondary School 0.7



Transport Information

Train Stations: Portchester 1.2 miles, Cosham 1.3 miles, Hilsea 1.7 miles



Address

Bryher Island, Port Solent, Portsmouth, Hampshire, PO6



Directions

For directions to this property please contact us.





cubitt&west
Helping you move forwards

Call Portsmouth Branch 023 9266 1213 ■ cubittandwest.co.uk



■ Legal advice should be taken to verify fixtures/fittings, planning, alterations and/or lease details ■ Appliances & services are untested, dimensions are approximate and floor plans are not to scale



41634074/20230706/JT/MH