



Price

£275,000

Freehold

3x  1x  1x 

**Salerno Drive, Gosport,
Hampshire, PO12**

OVER 60?

Secure this property
for up to **59% less!**

cubitt&west
Helping you move forwards



Main features

- Well presented end of terrace home
- Hard-standing, providing off-road parking
- Sunny aspect rear garden
- Upstairs bathroom and separate toilet downstairs
- Perfect for first time owners

Accommodation

GROUND FLOOR

Entrance Hallway

Cloakroom

Kitchen/Diner: 12'7 x 10'8 (3.84m x 3.25m)

Lounge: 17'7 x 11'10 (5.36m x 3.61m)

FIRST FLOOR

Landing

Bedroom 3: 8'10 x 7'1 (2.69m x 2.16m)

Bedroom 2: 12'8 x 8'6 (3.86m x 2.59m)

Bedroom 1: 12'1 x 11'4 (3.69m x 3.46m)

Bathroom

OUTSIDE

Driveway

Rear Garden

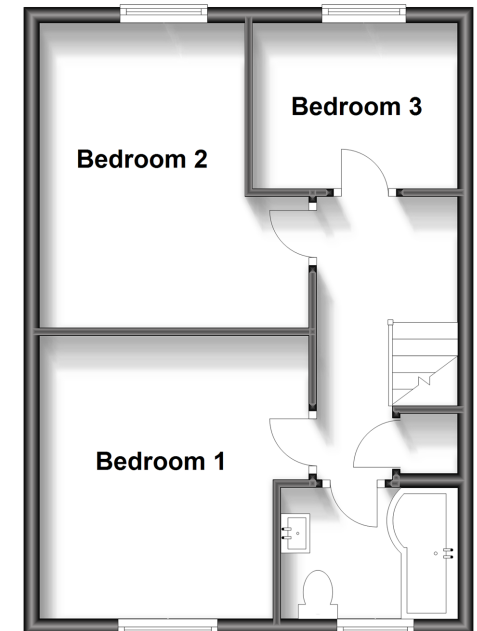
Ground Floor

Approx. 41.3 sq. metres (444.6 sq. feet)



First Floor

Approx. 40.6 sq. metres (436.6 sq. feet)



Call Portsmouth - 023 9266 1213 ■ cubittandwest.co.uk

■ Legal advice should be taken to verify fixtures/fittings, planning, alterations and/or lease details
 ■ Through a Homewise Home For Life Plan people aged 60+ can secure this property for up to 59% less, by purchasing a Lifetime Lease.

■ Appliances & services are untested, dimensions are approximate and floor plans are not to scale



41634079/20230706/JT/MH