



Price
£323,000

Freehold

3x  1x  3x 

**Battenburg Avenue,
Portsmouth, Hampshire,
PO2**

OVER 60?

Secure this property
for up to **59% less!**

cubitt&west
Helping you move forwards



Main features

- Stunning sunny aspect private garden with pedestrian rear access
- Generous living space throughout
- Beautiful kitchen/dining area with bi-folding doors
- Mayfield school catchment area
- Great transport links in and out of the city

Accommodation

GROUND FLOOR

Entrance Hallway

Lounge: 14'4 x 10'7 (4.37m x 3.23m)

Kitchen/Dining Area: 17'3 x 11'3 (5.26m x 3.43m)

Family Area: 14'3 x 9'4 (4.35m x 2.85m)

FIRST FLOOR

Landing

Bedroom 3: 8'0 x 6'5 (2.44m x 1.96m)

Bedroom 1: 14'1 x 10'7 (4.30m x 3.23m)

Bedroom 2: 11'9 x 11'0 (3.58m x 3.36m)

Bathroom: 8'3 x 6'1 (2.52m x 1.86m)

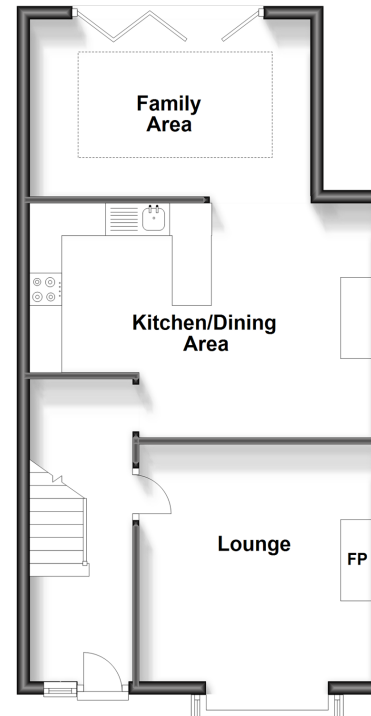
OUTSIDE

Front Forecourt

Rear Garden

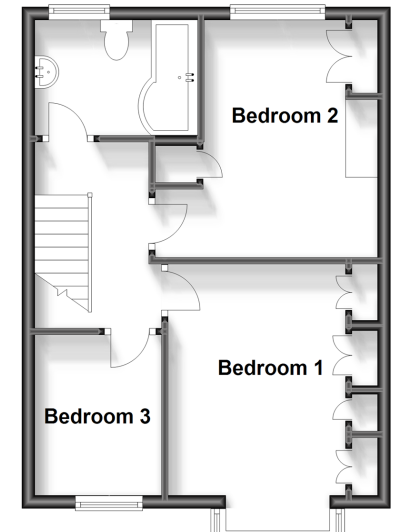
Ground Floor

Approx. 52.1 sq. metres (561.2 sq. feet)



First Floor

Approx. 39.5 sq. metres (425.2 sq. feet)



Call Portsmouth - 023 9266 1213 ■ cubittandwest.co.uk

■ Legal advice should be taken to verify fixtures/fittings, planning, alterations and/or lease details
 ■ Through a Homewise Home For Life Plan people aged 60+ can secure this property for up to 59% less, by purchasing a Lifetime Lease.

■ Appliances & services are untested, dimensions are approximate and floor plans are not to scale



41634084/20230717/ZMG/ZMG