



Price
£57,500

Leasehold

3x  1x  1x 

**Garnier Street,
Portsmouth, Hampshire,
PO1**

OVER 60?

Secure this property
for up to **59% less!**

cubitt&west
Helping you move forwards



Main features

- Available for shared ownership from a 25% share
- Spacious home close to local amenities
- Open plan lounge/dining area
- Forecourt at front of property
- Private rear garden - low maintenance
- Cash purchasers only

Accommodation

GROUND FLOOR

Entrance Hallway

Lounge/Dining Room: 22'8 x 13'3
(6.91m x 4.04m)

Kitchen: 10'3 x 8'8 (3.13m x 2.64m)

Bathroom: 8'2 x 7'3 (2.49m x 2.21m)

FIRST FLOOR

Landing

Bedroom 1: 13'2 x 11'3 (4.02m x 3.43m)

Bedroom 2: 11'0 x 8'7 (3.36m x 2.62m)

Bedroom 3: 9'10 x 8'2 (3.00m x 2.49m)

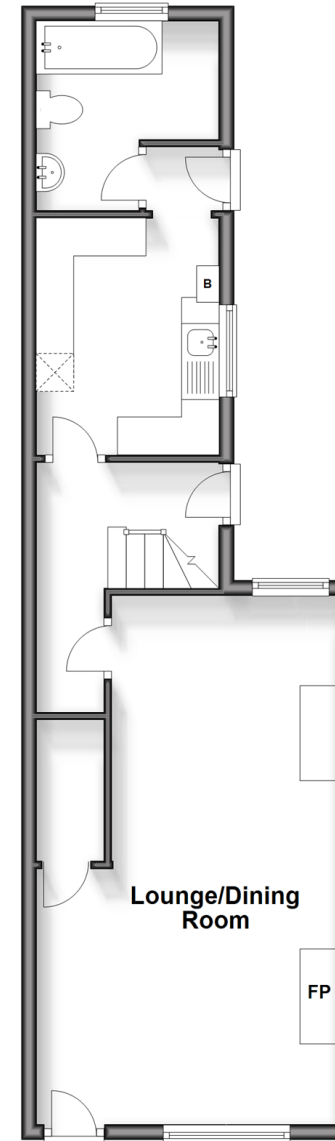
OUTSIDE

Front Forecourt

Rear Garden

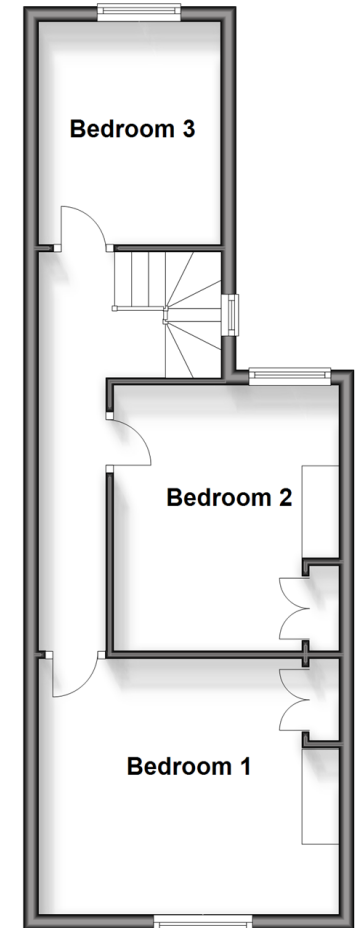
Ground Floor

Approx. 46.5 sq. metres (500.3 sq. feet)



First Floor

Approx. 39.7 sq. metres (427.2 sq. feet)



Call Portsmouth - 023 9266 1213 ■ cubittandwest.co.uk

- Legal advice should be taken to verify fixtures/fittings, planning, alterations and/or lease details
- Appliances & services are untested, dimensions are approximate and floor plans are not to scale
- Through a Homewise Home For Life Plan people aged 60+ can secure this property for up to 59% less, by purchasing a Lifetime Lease.



41634124/20231130/JT/MH