



OVER 60?

Secure this property
for up to **59% less!**

Price
£250,000

Freehold

3x  1x  2x 

**Queens Road,
Portsmouth, Hampshire,
PO2**

cubitt&west
Helping you move forwards



Main features

- Beautifully presented bay and forecourt home
- Perfect for a first time buyer couple or growing family
- Two separate living spaces
- Private, sunny aspect rear garden
- Upstairs bathroom with additional downstairs toilet

Accommodation

GROUND FLOOR

Entrance Hallway

Lounge: 14'1 x 13'3 (4.30m x 4.04m)

Separate Toilet

Kitchen: 11'6 x 9'11 (3.51m x 3.02m)

Dining Room: 12'7 x 9'11 (3.84m x 3.02m)

FIRST FLOOR

Landing

Bedroom 1: 14'2 x 12'1 (4.32m x 3.69m)

Bedroom 2: 11'6 x 10'1 (3.51m x 3.08m)

Bedroom 3: 13'1 x 7'3 (3.99m x 2.21m)

Bathroom: 7'4 x 5'5 (2.24m x 1.65m)

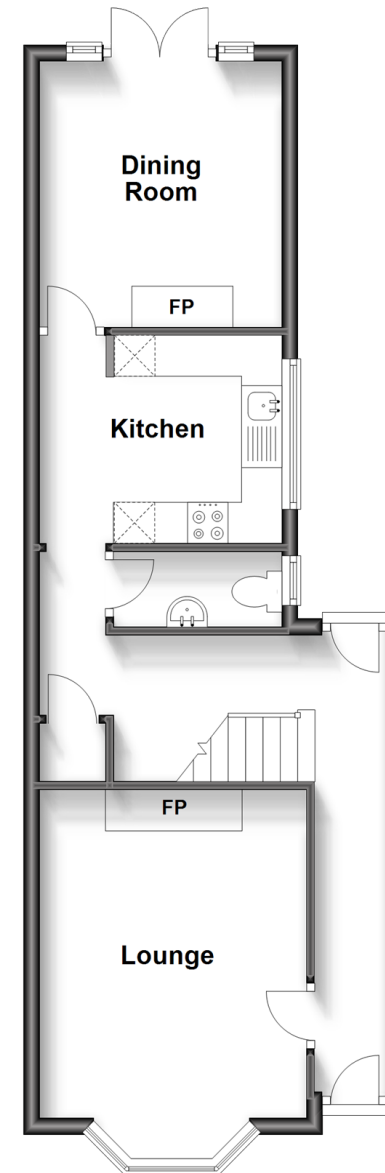
OUTSIDE

Front Forecourt

Rear Garden

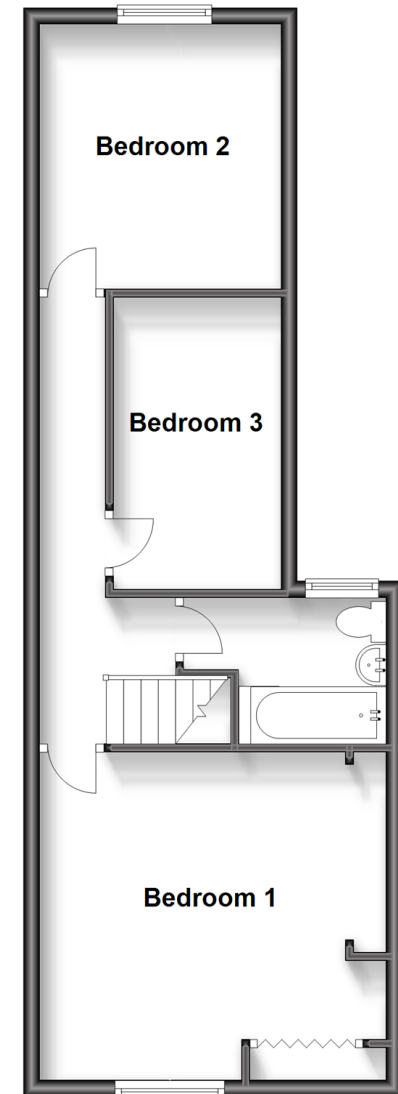
Ground Floor

Approx. 46.4 sq. metres (499.0 sq. feet)



First Floor

Approx. 46.4 sq. metres (499.8 sq. feet)



Call Portsmouth - 023 9266 1213 ■ cubittandwest.co.uk

- Legal advice should be taken to verify fixtures/fittings, planning, alterations and/or lease details
- Appliances & services are untested, dimensions are approximate and floor plans are not to scale
- Through a Homewise Home For Life Plan people aged 60+ can secure this property for up to 59% less, by purchasing a Lifetime Lease.



41634133/20230717/ZMG/MH