



OVER 60?

Secure this property
for up to **59% less!**

Price

£250,000

Freehold

3x  1x  2x 

**Paddington Road, North
End, Portsmouth,
Hampshire, PO2**

cubitt&west
Helping you move forwards



Main features

- This property has all double bedrooms and a conservatory
- Sunny aspect private rear garden
- Close to all your local daily amenities
- Excellent school catchment area
- Being sold chain free

Accommodation

GROUND FLOOR

Entrance Hallway

Dining Room: 15'1 x 9'4 (4.60m x 2.85m)

Kitchen: 12'9 x 7'5 (3.89m x 2.26m)

Separate Toilet

Lounge: 15'5 x 9'11 (4.70m x 3.02m)

Conservatory: 9'1 x 5'1 (2.77m x 1.55m)

FIRST FLOOR

Landing

Bedroom 1: 13'4 x 12'5 (4.07m x 3.79m)

Bedroom 2: 12'1 x 9'5 (3.69m x 2.87m)

Bedroom 3: 12'3 x 8'3 (3.74m x 2.52m)

Bathroom: 7'9 x 6'2 (2.36m x 1.88m)

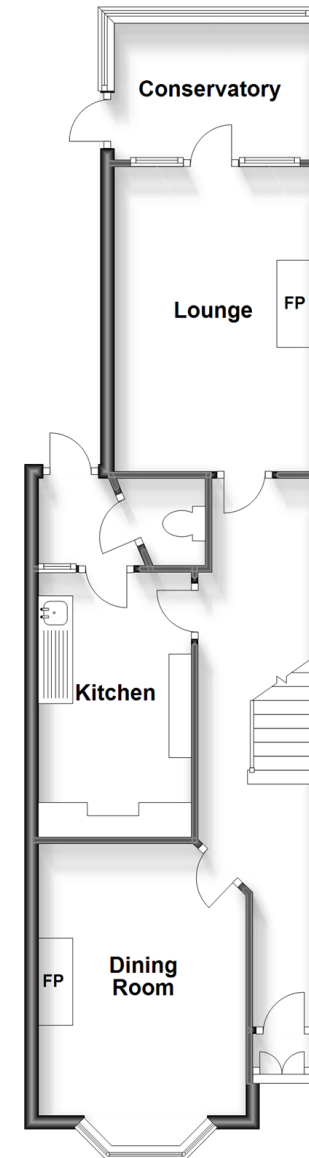
OUTSIDE

Front Forecourt

Rear Garden

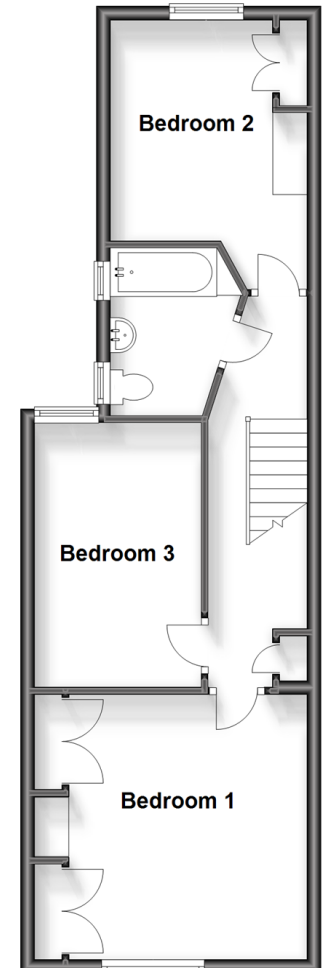
Ground Floor

Approx. 54.5 sq. metres (586.2 sq. feet)



First Floor

Approx. 47.1 sq. metres (506.8 sq. feet)



Call Portsmouth - 023 9266 1213 ■ cubittandwest.co.uk

- If buying to let, the energy rating will need to be improved to at least 'E' rating before you can let the property
- Legal advice should be taken to verify fixtures/fittings, planning, alterations and/or lease details
- Appliances & services are untested, dimensions are approximate and floor plans are not to scale
- Through a Homewise Home For Life Plan people aged 60+ can secure this property for up to 59% less, by purchasing a Lifetime Lease.



41634155/20230831/ZMG/ZMG